

Anti-ZP1 antibody (190-270 Internal) (STJ96359)

STJ96359

GENERAL INFORMATION

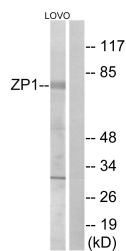
Product Type	Primary antibodies
Short Description	Rabbit polyclonal antibody anti-Zona Pellucida Sperm-Binding Protein 1 (190-270 Internal) is suitable for use in Western Blot, Immunohistochemistry, Immunofluorescence and ELISA research applications.
Applications	WB, IHC-P, IF-P, ELISA
Host/Source	Rabbit
Reactivity	Human, Rat, Mouse

PRODUCT PROPERTIES

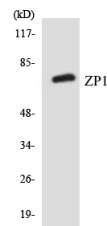
Clonality	Polyclonal
Clone ID	
Concentration	1 mg/mL
Conjugation	Unconjugated
Purification	The antibody was affinity-purified from rabbit anti-serum by affinity-chromatography.
Dilution Range	WB 1:500-1:2000 IHC 1:100-1:300 ELISA 1:10000
Formulation	PBS, 50% Glycerol, 0.5% BSA and 0.02% Sodium Azide.
Isotype	IgG
Storage Instruction	Store at -20°C for up to 1 year from the date of receipt, and avoid repeat freeze-thaw cycles.

TARGET INFORMATION

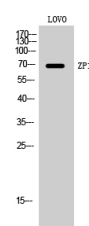
Gene ID	22917
Gene Symbol	ZP1
Uniprot ID	ZP1_HUMAN
Immunogen	The antiserum was produced against synthesized peptide derived from human ZP1 at amino acid range 221-270
Immunogen Region	190-270 Internal
Specificity	ZP1 polyclonal antibody (Zona Pellucida Sperm-Binding Protein 1) binds to endogenous Zona Pellucida Sperm-Binding Protein 1 at the amino acid region 190-270 Internal.
Immunogen Sequence	



Western blot analysis of lysates from LOVO cells, using ZP1 Antibody. The lane on the right is blocked with the synthesized peptide.



Western blot analysis of the lysates from HeLa cells using ZP1 antibody.



Western blot analysis of LOVO cells using ZP1 Polyclonal Antibody. Secondary antibody was diluted at 1:20000

This product is suitable for in-vitro studies under the RESEARCH USE ONLY [RUO] licence. This product must not be used as for diagnostic or other medical purposes.
St John's Laboratory Ltd, Knowledge Dock Business Centre, University Way, London, E16 2RD | Tel: 0208 223 3081