

Anti-TJP2 antibody (1063-1112) (STJ96358)

STJ96358

GENERAL INFORMATION

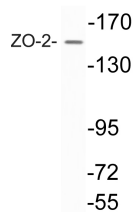
Product Type	Primary antibodies
Short Description	Rabbit polyclonal antibody anti-Tight Junction Protein Zo-2 (1063-1112) is suitable for use in Western Blot and ELISA research applications.
Applications	WB, ELISA
Host/Source	Rabbit
Reactivity	Human, Mouse, Rat

PRODUCT PROPERTIES

Clonality	Polyclonal
Clone ID	
Concentration	1 mg/mL
Conjugation	Unconjugated
Purification	The antibody was affinity-purified from rabbit anti-serum by affinity-chromatography.
Dilution Range	WB 1:500-1:2000 ELISA 1:10000
Formulation	PBS, 50% Glycerol, 0.5% BSA and 0.02% Sodium Azide.
Isotype	IgG
Storage Instruction	Store at -20°C for up to 1 year from the date of receipt, and avoid repeat freeze-thaw cycles.

TARGET INFORMATION

Gene ID	9414
Gene Symbol	TJP2
Uniprot ID	ZO2_HUMAN
Immunogen	The antiserum was produced against synthesized peptide derived from human ZO-2 at amino acid range 1063-1112
Immunogen Region	1063-1112
Specificity	TJP2 polyclonal antibody (Tight Junction Protein Zo-2) binds to endogenous Tight Junction Protein Zo-2 at the amino acid region 1063-1112.
Immunogen Sequence	



Western blot analysis of lysate from K562 cells, using ZO-2 antibody.