

## Anti-SLC30A8 antibody (140-220 Internal) (STJ96355)

STJ96355

### GENERAL INFORMATION

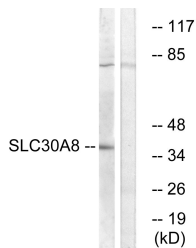
<b>Product Type</b>	Primary antibodies
<b>Short Description</b>	Rabbit polyclonal antibody anti-Zinc Transporter 8 (140-220 Internal) is suitable for use in Western Blot and ELISA research applications.
<b>Applications</b>	WB, ELISA
<b>Host/Source</b>	Rabbit
<b>Reactivity</b>	Human, Rat, Mouse

### PRODUCT PROPERTIES

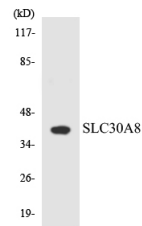
<b>Clonality</b>	Polyclonal
<b>Clone ID</b>	
<b>Concentration</b>	1 mg/mL
<b>Conjugation</b>	Unconjugated
<b>Purification</b>	The antibody was affinity-purified from rabbit anti-serum by affinity-chromatography.
<b>Dilution Range</b>	WB 1:500-1:2000 ELISA 1:10000
<b>Formulation</b>	PBS, 50% Glycerol, 0.5% BSA and 0.02% Sodium Azide.
<b>Isotype</b>	IgG
<b>Storage Instruction</b>	Store at -20°C for up to 1 year from the date of receipt, and avoid repeat freeze-thaw cycles.

### TARGET INFORMATION

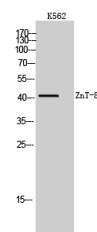
<b>Gene ID</b>	169026
<b>Gene Symbol</b>	SLC30A8
<b>Uniprot ID</b>	ZNT8_HUMAN
<b>Immunogen</b>	The antiserum was produced against synthesized peptide derived from human SLC30A8 at amino acid range 171-220
<b>Immunogen Region</b>	140-220 Internal
<b>Specificity</b>	SLC30A8 polyclonal antibody (Zinc Transporter 8) binds to endogenous Zinc Transporter 8 at the amino acid region 140-220 Internal.
<b>Immunogen Sequence</b>	



Western blot analysis of lysates from K562 cells, using SLC30A8 Antibody. The lane on the right is blocked with the synthesized peptide.



Western blot analysis of the lysates from HeLa cells using SLC30A8 antibody.



Western blot analysis of K562 cells using ZnT-8 Polyclonal Antibody. Secondary antibody was diluted at 1:20000

This product is suitable for in-vitro studies under the RESEARCH USE ONLY [RUO] licence. This product must not be used as for diagnostic or other medical purposes.  
St John's Laboratory Ltd, Knowledge Dock Business Centre, University Way, London, E16 2RD | Tel: 0208 223 3081