

Anti-SLC30A4 antibody (40-120 Internal) (STJ96354)

STJ96354

GENERAL INFORMATION

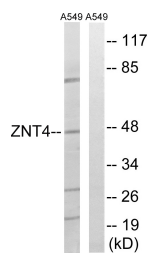
Product Type	Primary antibodies
Short Description	Rabbit polyclonal antibody anti-Zinc Transporter 4 (40-120 Internal) is suitable for use in Western Blot, Immunohistochemistry, Immunofluorescence and ELISA research applications.
Applications	WB, IHC-P, IF-P, ELISA
Host/Source	Rabbit
Reactivity	Human, Mouse, Rat

PRODUCT PROPERTIES

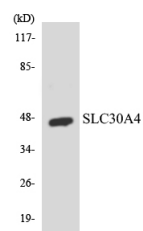
Clonality	Polyclonal
Clone ID	
Concentration	1 mg/mL
Conjugation	Unconjugated
Purification	The antibody was affinity-purified from rabbit anti-serum by affinity-chromatography.
Dilution Range	WB 1:500-1:2000 IHC 1:100-1:300 ELISA 1:5000
Formulation	PBS, 50% Glycerol, 0.5% BSA and 0.02% Sodium Azide.
Isotype	IgG
Storage Instruction	Store at -20°C for up to 1 year from the date of receipt, and avoid repeat freeze-thaw cycles.

TARGET INFORMATION

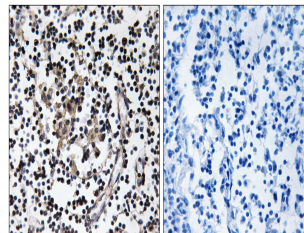
Gene ID	7782
Gene Symbol	SLC30A4
Uniprot ID	ZNT4_HUMAN
Immunogen	The antiserum was produced against synthesized peptide derived from human SLC30A4 at amino acid range 71-120
Immunogen Region	40-120 Internal
Specificity	SLC30A4 polyclonal antibody (Zinc Transporter 4) binds to endogenous Zinc Transporter 4 at the amino acid region 40-120 Internal.
Immunogen Sequence	



Western blot analysis of lysates from A549 cells, using SLC30A4 Antibody. The lane on the right is blocked with the synthesized peptide.



Western blot analysis of the lysates from 293 cells using SLC30A4 antibody.



Immunohistochemistry analysis of paraffin-embedded human lymph node tissue, using SLC30A4 Antibody. The picture on the right is blocked with the synthesized peptide.

This product is suitable for in-vitro studies under the RESEARCH USE ONLY [RUO] licence. This product must not be used as for diagnostic or other medical purposes.
St John's Laboratory Ltd, Knowledge Dock Business Centre, University Way, London, E16 2RD | Tel: 0208 223 3081