

Anti-ZNF668 antibody (240-320 Internal) (STJ96342)

STJ96342

GENERAL INFORMATION

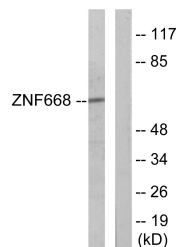
Product Type	Primary antibodies
Short Description	Rabbit polyclonal antibody anti-Zinc Finger Protein 668 (240-320 Internal) is suitable for use in Western Blot, Immunohistochemistry, Immunofluorescence, Immunocytochemistry and ELISA research applications.
Applications	WB, IHC-P, IF, ICC, ELISA
Host/Source	Rabbit
Reactivity	Human, Mouse

PRODUCT PROPERTIES

Clonality	Polyclonal
Clone ID	
Concentration	1 mg/mL
Conjugation	Unconjugated
Purification	The antibody was affinity-purified from rabbit anti-serum by affinity-chromatography.
Dilution Range	WB 1:500-1:2000 IHC 1:100-1:300 IF 1:200-1:1000 ELISA 1:10000
Formulation	PBS, 50% Glycerol, 0.5% BSA and 0.02% Sodium Azide.
Isotype	IgG
Storage Instruction	Store at -20°C for up to 1 year from the date of receipt, and avoid repeat freeze-thaw cycles.

TARGET INFORMATION

Gene ID	79759
Gene Symbol	ZNF668
Uniprot ID	ZNF668_HUMAN
Immunogen	The antiserum was produced against synthesized peptide derived from human ZNF668 at amino acid range 271-320
Immunogen Region	240-320 Internal
Specificity	ZNF668 polyclonal antibody (Zinc Finger Protein 668) binds to endogenous Zinc Finger Protein 668 at the amino acid region 240-320 Internal.
Immunogen Sequence	



Western blot analysis of lysates from Jurkat cells, using ZNF668 Antibody. The lane on the right is blocked with the synthesized peptide.