

Anti-ZNF608 antibody (1200-1280 C-Term) (STJ96341)

STJ96341

GENERAL INFORMATION

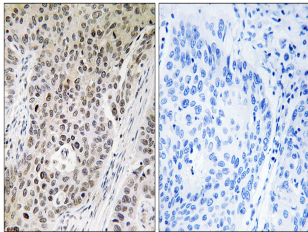
Product Type	Primary antibodies
Short Description	Rabbit polyclonal antibody anti-Zinc Finger Protein 608 (1200-1280 C-Term) is suitable for use in Western Blot, Immunohistochemistry, Immunofluorescence and ELISA research applications.
Applications	WB, IHC-P, IF-P, ELISA
Host/Source	Rabbit
Reactivity	Human, Mouse

PRODUCT PROPERTIES

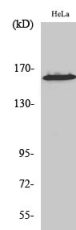
Clonality	Polyclonal
Clone ID	
Concentration	1 mg/mL
Conjugation	Unconjugated
Purification	The antibody was affinity-purified from rabbit anti-serum by affinity-chromatography.
Dilution Range	WB 1:500-1:2000 IHC 1:100-1:300 ELISA 1:5000
Formulation	PBS, 50% Glycerol, 0.5% BSA and 0.02% Sodium Azide.
Isotype	IgG
Storage Instruction	Store at -20°C for up to 1 year from the date of receipt, and avoid repeat freeze-thaw cycles.

TARGET INFORMATION

Gene ID	57507
Gene Symbol	ZNF608
Uniprot ID	ZNF608_HUMAN
Immunogen	The antiserum was produced against synthesized peptide derived from human ZNF608 at amino acid range 1231-1280
Immunogen Region	1200-1280 C-Term
Specificity	ZNF608 polyclonal antibody (Zinc Finger Protein 608) binds to endogenous Zinc Finger Protein 608 at the amino acid region 1200-1280 C-Term.
Immunogen Sequence	



Immunohistochemistry analysis of paraffin-embedded human lung carcinoma tissue, using ZNF608 Antibody. The picture on the right is blocked with the synthesized peptide.



Western blot analysis of various cells using ZNF608 Polyclonal Antibody diluted at 1: 500. Secondary antibody was diluted at 1:20000