

Anti-ZNF420 antibody (270-350 Internal) (STJ96330)

STJ96330

GENERAL INFORMATION

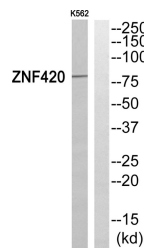
Product Type	Primary antibodies
Short Description	Rabbit polyclonal antibody anti-Zinc Finger Protein 420 (270-350 Internal) is suitable for use in Western Blot and ELISA research applications.
Applications	WB, ELISA
Host/Source	Rabbit
Reactivity	Human, Mouse

PRODUCT PROPERTIES

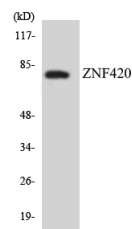
Clonality	Polyclonal
Clone ID	
Concentration	1 mg/mL
Conjugation	Unconjugated
Purification	The antibody was affinity-purified from rabbit anti-serum by affinity-chromatography.
Dilution Range	WB 1:500-1:2000 ELISA 1:40000
Formulation	PBS, 50% Glycerol, 0.5% BSA and 0.02% Sodium Azide.
Isotype	IgG
Storage Instruction	Store at -20°C for up to 1 year from the date of receipt, and avoid repeat freeze-thaw cycles.

TARGET INFORMATION

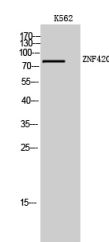
Gene ID	147923
Gene Symbol	ZNF420
Uniprot ID	ZN420_HUMAN
Immunogen	The antiserum was produced against synthesized peptide derived from human ZNF420 at amino acid range 301-350
Immunogen Region	270-350 Internal
Specificity	ZNF420 polyclonal antibody (Zinc Finger Protein 420) binds to endogenous Zinc Finger Protein 420 at the amino acid region 270-350 Internal.
Immunogen Sequence	



Western blot analysis of ZNF420 Antibody. The lane on the right is blocked with the ZNF420 peptide.



Western blot analysis of the lysates from COLO205 cells using ZNF420 antibody.



Western blot analysis of K562 cells using ZNF420 Polyclonal Antibody. Secondary antibody was diluted at 1:20000 cells nucleus extracted by Minute™ Cytoplasmic and Nuclear Fractionation kit (SC-003, Inventibiotech, MN, USA).

This product is suitable for in-vitro studies under the RESEARCH USE ONLY [RUO] licence. This product must not be used as for diagnostic or other medical purposes.
St John's Laboratory Ltd, Knowledge Dock Business Centre, University Way, London, E16 2RD | Tel: 0208 223 3081