

Anti-SLC39A4 antibody (400-480 Internal) (STJ96314)

STJ96314

GENERAL INFORMATION

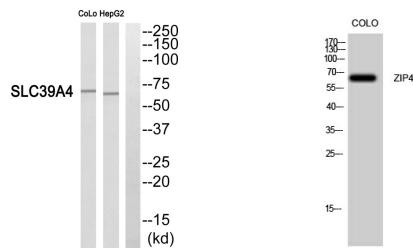
Product Type	Primary antibodies
Short Description	Rabbit polyclonal antibody anti-Zinc Transporter Zip4 (400-480 Internal) is suitable for use in Western Blot and ELISA research applications.
Applications	WB, ELISA
Host/Source	Rabbit
Reactivity	Human, Rat, Mouse

PRODUCT PROPERTIES

Clonality	Polyclonal
Clone ID	
Concentration	1 mg/mL
Conjugation	Unconjugated
Purification	The antibody was affinity-purified from rabbit anti-serum by affinity-chromatography.
Dilution Range	WB 1:500-1:2000 ELISA 1:40000
Formulation	PBS, 50% Glycerol, 0.5% BSA and 0.02% Sodium Azide.
Isotype	IgG
Storage Instruction	Store at -20°C for up to 1 year from the date of receipt, and avoid repeat freeze-thaw cycles.

TARGET INFORMATION

Gene ID	55630
Gene Symbol	SLC39A4
Uniprot ID	S39A4_HUMAN
Immunogen	The antiserum was produced against synthesized peptide derived from human SLC39A4 at amino acid range 431-480
Immunogen Region	400-480 Internal
Specificity	SLC39A4 polyclonal antibody (Zinc Transporter Zip4) binds to endogenous Zinc Transporter Zip4 at the amino acid region 400-480 Internal.
Immunogen Sequence	



Western blot analysis of SLC39A4 Antibody. The lane on the right is blocked with the SLC39A4 peptide.

Western blot analysis of Colo cells using ZIP4 Polyclonal Antibody. Secondary antibody was diluted at 1:20000

This product is suitable for in-vitro studies under the RESEARCH USE ONLY [RUO] licence. This product must not be used as for diagnostic or other medical purposes.
St John's Laboratory Ltd, Knowledge Dock Business Centre, University Way, London, E16 2RD | Tel: 0208 223 3081