

Anti-Zic1/2/3/4/5 antibody (250-330 Internal) (STJ96311)

STJ96311

GENERAL INFORMATION

Product Type	Primary antibodies
Short Description	Rabbit polyclonal antibody anti-Zinc finger protein ZIC 1 and Zinc finger protein ZIC 2 and Zinc finger protein ZIC 3 and Zinc finger protein ZIC 4 and Zinc finger protein ZIC 5 (250-330 Internal) is suitable for use in Immunofluorescence, Immunocyto
Applications	IF, ICC, ELISA
Host/Source	Rabbit
Reactivity	Human, Mouse

PRODUCT PROPERTIES

Clonality	Polyclonal
Clone ID	
Concentration	1 mg/mL
Conjugation	Unconjugated
Purification	The antibody was affinity-purified from rabbit anti-serum by affinity-chromatography.
Dilution	IF 1:200-1:1000
Range	ELISA 1:40000
Formulation	PBS, 50% Glycerol, 0.5% BSA and 0.02% Sodium Azide.
Isotype	IgG
Storage	Store at -20°C for up to 1 year from the date of receipt, and avoid repeat freeze-thaw cycles.
Instruction	

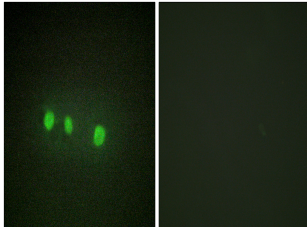
TARGET INFORMATION

Gene ID [7546](#)
[7545](#)
[85416](#)
[ZIC2](#)
[ZIC1](#)
[ZIC2_HUMAN](#)
[ZIC1_HUMAN](#)
[ZIC5_HUMAN](#)

Immunogen The antiserum was produced against synthesized peptide derived from human ZIC1/2/3/4/5 at amino acid range 281-330
Immunogen Region 250-330 Internal

Specificity Zic1/2/3/4/5 polyclonal antibody (Zinc finger protein ZIC 1 and Zinc finger protein ZIC 2 and Zinc finger protein ZIC 3 and Zinc finger protein ZIC 4 and Zinc finger protein ZIC 5) binds to endogenous Zinc finger protein ZIC 1 and Zinc finger protein

Immunogen Sequence



Immunofluorescence analysis of HepG2 cells, using ZIC1/2/3/4/5 Antibody. The picture on the right is blocked with the synthesized peptide.

This product is suitable for in-vitro studies under the RESEARCH USE ONLY [RUO] licence. This product must not be used as for diagnostic or other medical purposes.
 St John's Laboratory Ltd, Knowledge Dock Business Centre, University Way, London, E16 2RD | Tel: 0208 223 3081