

Anti-ZFYVE19 antibody (280-360 Internal) (STJ96307)

STJ96307

GENERAL INFORMATION

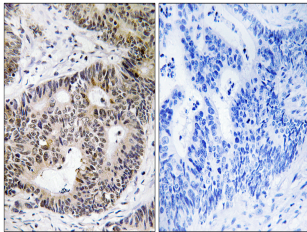
| | |
|--------------------------|---|
| Product Type | Primary antibodies |
| Short Description | Rabbit polyclonal antibody anti-Abscission/Nocut Checkpoint Regulator (280-360 Internal) is suitable for use in Western Blot, Immunohistochemistry, Immunofluorescence and ELISA research applications. |
| Applications | WB, IHC-P, IF-P, ELISA |
| Host/Source | Rabbit |
| Reactivity | Human, Rat, Mouse |

PRODUCT PROPERTIES

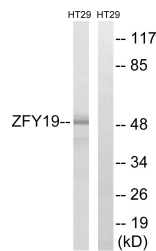
| | |
|----------------------------|--|
| Clonality | Polyclonal |
| Clone ID | |
| Concentration | 1 mg/mL |
| Conjugation | Unconjugated |
| Purification | The antibody was affinity-purified from rabbit anti-serum by affinity-chromatography. |
| Dilution Range | WB 1:500-1:2000 IHC 1:100-1:300 ELISA 1:40000 |
| Formulation | PBS, 50% Glycerol, 0.5% BSA and 0.02% Sodium Azide. |
| Isotype | IgG |
| Storage Instruction | Store at -20°C for up to 1 year from the date of receipt, and avoid repeat freeze-thaw cycles. |

TARGET INFORMATION

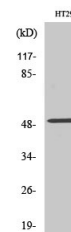
| | |
|---------------------------|--|
| Gene ID | 84936 |
| Gene Symbol | ZFYVE19 |
| Uniprot ID | ANCHR_HUMAN |
| Immunogen | The antiserum was produced against synthesized peptide derived from human ZFYVE19 at amino acid range 311-360 |
| Immunogen Region | 280-360 Internal |
| Specificity | ZFYVE19 polyclonal antibody (Abscission/Nocut Checkpoint Regulator) binds to endogenous Abscission/Nocut Checkpoint Regulator at the amino acid region 280-360 Internal. |
| Immunogen Sequence | |



Immunohistochemistry analysis of paraffin-embedded human colon carcinoma tissue, using ZFYVE19 Antibody. The picture on the right is blocked with the synthesized peptide.



Western blot analysis of lysates from HT-29 cells, using ZFYVE19 Antibody. The lane on the right is blocked with the synthesized peptide.



Western blot analysis of various cells using ZFYVE19 Polyclonal Antibody. Secondary antibody was diluted at 1:20000