

Anti-ZDHHC20 antibody (50-130 Internal) (STJ96305)

STJ96305

GENERAL INFORMATION

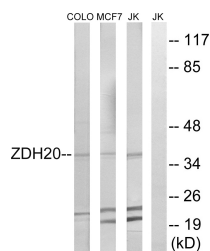
Product Type	Primary antibodies
Short Description	Rabbit polyclonal antibody anti-Palmitoyltransferase Zdhhc20 (50-130 Internal) is suitable for use in Western Blot and ELISA research applications.
Applications	WB, ELISA
Host/Source	Rabbit
Reactivity	Human, Mouse, Rat

PRODUCT PROPERTIES

Clonality	Polyclonal
Clone ID	
Concentration	1 mg/mL
Conjugation	Unconjugated
Purification	The antibody was affinity-purified from rabbit anti-serum by affinity-chromatography.
Dilution Range	WB 1:500-1:2000 ELISA 1:10000
Formulation	PBS, 50% Glycerol, 0.5% BSA and 0.02% Sodium Azide.
Isotype	IgG
Storage	Store at -20°C for up to 1 year from the date of receipt, and avoid repeat freeze-thaw cycles.
Instruction	

TARGET INFORMATION

Gene ID	253832
Gene Symbol	ZDHHC20
Uniprot ID	ZDH20_HUMAN
Immunogen	The antiserum was produced against synthesized peptide derived from human ZDHHC20 at amino acid range 72-121
Immunogen Region	50-130 Internal
Specificity	ZDHHC20 polyclonal antibody (Palmitoyltransferase Zdhhc20) binds to endogenous Palmitoyltransferase Zdhhc20 at the amino acid region 50-130 Internal.
Immunogen Sequence	



Western blot analysis of lysates from Jurkat, MCF-7, and COLO cells, using ZDHHC20 Antibody. The lane on the right is blocked with the synthesized peptide.