

Anti-ZC3H4 antibody (740-820 Internal) (STJ96303)

STJ96303

GENERAL INFORMATION

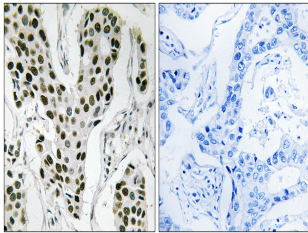
Product Type	Primary antibodies
Short Description	Rabbit polyclonal antibody anti-Zinc Finger Ccch Domain-Containing Protein 4 (740-820 Internal) is suitable for use in Immunohistochemistry, Immunofluorescence and ELISA research applications.
Applications	IHC-P, IF-P, ELISA
Host/Source	Rabbit
Reactivity	Human, Mouse

PRODUCT PROPERTIES

Clonality	Polyclonal
Clone ID	
Concentration	1 mg/mL
Conjugation	Unconjugated
Purification	The antibody was affinity-purified from rabbit anti-serum by affinity-chromatography.
Dilution	IHC 1:100-1:300
Range	ELISA 1:10000
Formulation	PBS, 50% Glycerol, 0.5% BSA and 0.02% Sodium Azide.
Isotype	IgG
Storage	Store at -20°C for up to 1 year from the date of receipt, and avoid repeat freeze-thaw cycles.
Instruction	

TARGET INFORMATION

Gene ID	23211
Gene Symbol	ZC3H4
Uniprot ID	ZC3H4_HUMAN
Immunogen	The antiserum was produced against synthesized peptide derived from human ZC3H4 at amino acid range 771-820
Immunogen Region	740-820 Internal
Specificity	ZC3H4 polyclonal antibody (Zinc Finger Ccch Domain-Containing Protein 4) binds to endogenous Zinc Finger Ccch Domain-Containing Protein 4 at the amino acid region 740-820 Internal.
Immunogen Sequence	



Immunohistochemistry analysis of paraffin-embedded human breast carcinoma tissue, using ZC3H4 Antibody. The picture on the right is blocked with the synthesized peptide.