

Anti-ZC3H13 antibody (1540-1620 C-Term) (STJ96302)

STJ96302

GENERAL INFORMATION

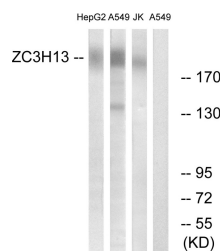
Product Type	Primary antibodies
Short Description	Rabbit polyclonal antibody anti-Zinc Finger Ccch Domain-Containing Protein 13 (1540-1620 C-Term) is suitable for use in Western Blot and ELISA research applications.
Applications	WB, ELISA
Host/Source	Rabbit
Reactivity	Human, Mouse

PRODUCT PROPERTIES

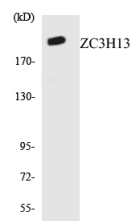
Clonality	Polyclonal
Clone ID	
Concentration	1 mg/mL
Conjugation	Unconjugated
Purification	The antibody was affinity-purified from rabbit anti-serum by affinity-chromatography.
Dilution Range	WB 1:500-1:2000 ELISA 1:10000
Formulation	PBS, 50% Glycerol, 0.5% BSA and 0.02% Sodium Azide.
Isotype	IgG
Storage	Store at -20°C for up to 1 year from the date of receipt, and avoid repeat freeze-thaw cycles.
Instruction	

TARGET INFORMATION

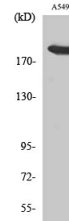
Gene ID	23091
Gene Symbol	ZC3H13
Uniprot ID	ZC3HD_HUMAN
Immunogen	The antiserum was produced against synthesized peptide derived from human ZC3H13 at amino acid range 1571-1620
Immunogen Region	1540-1620 C-Term
Specificity	ZC3H13 polyclonal antibody (Zinc Finger Ccch Domain-Containing Protein 13) binds to endogenous Zinc Finger Ccch Domain-Containing Protein 13 at the amino acid region 1540-1620 C-Term.
Immunogen Sequence	



Western blot analysis of lysates from A549, Jurkat, HepG2 cells, using ZC3H13 Antibody. The lane on the right is blocked with the synthesized peptide.



Western blot analysis of the lysates from HUVEC cells using ZC3H13 antibody.



Western blot analysis of various cells using ZC3H13 Polyclonal Antibody. Secondary antibody was diluted at 1:20000

This product is suitable for in-vitro studies under the RESEARCH USE ONLY [RUO] licence. This product must not be used as for diagnostic or other medical purposes.
St John's Laboratory Ltd, Knowledge Dock Business Centre, University Way, London, E16 2RD | Tel: 0208 223 3081