

Anti-ZC3H11A antibody (260-340 Internal) (STJ96301)

STJ96301

GENERAL INFORMATION

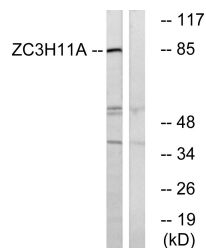
Product Type	Primary antibodies
Short Description	Rabbit polyclonal antibody anti-Zinc Finger Ccch Domain-Containing Protein 11a (260-340 Internal) is suitable for use in Western Blot and ELISA research applications.
Applications	WB, ELISA
Host/Source	Rabbit
Reactivity	Human, Monkey

PRODUCT PROPERTIES

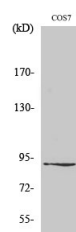
Clonality	Polyclonal
Clone ID	
Concentration	1 mg/mL
Conjugation	Unconjugated
Purification	The antibody was affinity-purified from rabbit anti-serum by affinity-chromatography.
Dilution Range	WB 1:500-1:2000 ELISA 1:20000
Formulation	PBS, 50% Glycerol, 0.5% BSA and 0.02% Sodium Azide.
Isotype	IgG
Storage	Store at -20°C for up to 1 year from the date of receipt, and avoid repeat freeze-thaw cycles.
Instruction	

TARGET INFORMATION

Gene ID	9877
Gene Symbol	ZC3H11A
Uniprot ID	ZC11A_HUMAN
Immunogen	The antiserum was produced against synthesized peptide derived from human ZC3H11A at amino acid range 291-340
Immunogen Region	260-340 Internal
Specificity	ZC3H11A polyclonal antibody (Zinc Finger Ccch Domain-Containing Protein 11a) binds to endogenous Zinc Finger Ccch Domain-Containing Protein 11a at the amino acid region 260-340 Internal.
Immunogen Sequence	



Western blot analysis of lysates from COS cells, using ZC3H11A Antibody. The lane on the right is blocked with the synthesized peptide.



Western blot analysis of various cells using ZC3H11A Polyclonal Antibody diluted at 1: 1000. Secondary antibody was diluted at 1:20000