

Anti-ZBTB40 antibody (1090-1170 C-Term) (STJ96300)

STJ96300

GENERAL INFORMATION

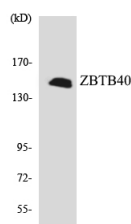
Product Type	Primary antibodies
Short Description	Rabbit polyclonal antibody anti-Zinc Finger And Btb Domain-Containing Protein 40 (1090-1170 C-Term) is suitable for use in Western Blot, Immunohistochemistry, Immunofluorescence and ELISA research applications.
Applications	WB, IHC-P, IF-P, ELISA
Host/Source	Rabbit
Reactivity	Human, Mouse

PRODUCT PROPERTIES

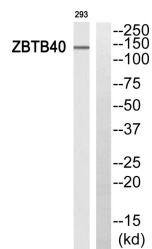
Clonality	Polyclonal
Clone ID	
Concentration	1 mg/mL
Conjugation	Unconjugated
Purification	The antibody was affinity-purified from rabbit anti-serum by affinity-chromatography.
Dilution Range	WB 1:500-1:2000 IHC 1:100-1:300 ELISA 1:10000
Formulation	PBS, 50% Glycerol, 0.5% BSA and 0.02% Sodium Azide.
Isotype	IgG
Storage Instruction	Store at -20°C for up to 1 year from the date of receipt, and avoid repeat freeze-thaw cycles.

TARGET INFORMATION

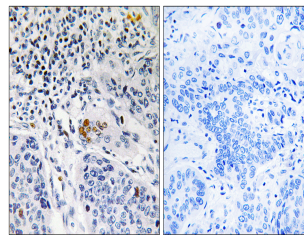
Gene ID	9923
Gene Symbol	ZBTB40
Uniprot ID	ZBT40_HUMAN
Immunogen	The antiserum was produced against synthesized peptide derived from human ZBTB40 at amino acid range 1121-1170
Immunogen Region	1090-1170 C-Term
Specificity	ZBTB40 polyclonal antibody (Zinc Finger And Btb Domain-Containing Protein 40) binds to endogenous Zinc Finger And Btb Domain-Containing Protein 40 at the amino acid region 1090-1170 C-Term.
Immunogen Sequence	



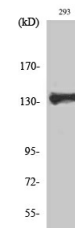
Western blot analysis of the lysates from HUVEC cells using ZBTB40 antibody.



Western blot analysis of ZBTB40 Antibody. The lane on the right is blocked with the ZBTB40 peptide.



Immunohistochemistry analysis of paraffin-embedded human lung carcinoma tissue, using ZBTB40 Antibody. The picture on the right is blocked with the synthesized peptide.



Western blot analysis of various cells using ZBTB40 Polyclonal Antibody. Secondary antibody was diluted at 1:20000 cells nucleus extracted by Minute™ Cytoplasmic and Nuclear Fractionation kit (SC-003, Inventibiotec, MN, USA).

This product is suitable for in-vitro studies under the RESEARCH USE ONLY [RUO] licence. This product must not be used as for diagnostic or other medical purposes.
St John's Laboratory Ltd, Knowledge Dock Business Centre, University Way, London, E16 2RD | Tel: 0208 223 3081