

## Anti-ZADH2 antibody (160-240 Internal) (STJ96293)

STJ96293

### GENERAL INFORMATION

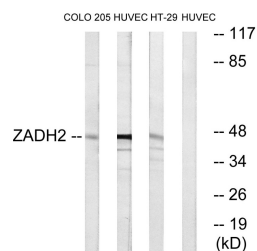
<b>Product Type</b>	Primary antibodies
<b>Short Description</b>	Rabbit polyclonal antibody anti-Prostaglandin Reductase 3 (160-240 Internal) is suitable for use in Western Blot, Immunohistochemistry, Immunofluorescence and ELISA research applications.
<b>Applications</b>	WB, IHC-P, IF-P, ELISA
<b>Host/Source</b>	Rabbit
<b>Reactivity</b>	Human, Mouse, Rat

### PRODUCT PROPERTIES

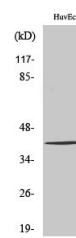
<b>Clonality</b>	Polyclonal
<b>Clone ID</b>	
<b>Concentration</b>	1 mg/mL
<b>Conjugation</b>	Unconjugated
<b>Purification</b>	The antibody was affinity-purified from rabbit anti-serum by affinity-chromatography.
<b>Dilution Range</b>	WB 1:500-1:2000 IHC 1:100-1:300 ELISA 1:10000
<b>Formulation</b>	PBS, 50% Glycerol, 0.5% BSA and 0.02% Sodium Azide.
<b>Isotype</b>	IgG
<b>Storage Instruction</b>	Store at -20°C for up to 1 year from the date of receipt, and avoid repeat freeze-thaw cycles.

### TARGET INFORMATION

<b>Gene ID</b>	284273
<b>Gene Symbol</b>	ZADH2
<b>Uniprot ID</b>	PTGR3_HUMAN
<b>Immunogen</b>	The antiserum was produced against synthesized peptide derived from human ZADH2 at amino acid range 191-240
<b>Immunogen Region</b>	160-240 Internal
<b>Specificity</b>	ZADH2 polyclonal antibody (Prostaglandin Reductase 3) binds to endogenous Prostaglandin Reductase 3 at the amino acid region 160-240 Internal.
<b>Immunogen Sequence</b>	



Western blot analysis of lysates from HUVEC, HT-29, and COLO cells, using ZADH2 Antibody. The lane on the right is blocked with the synthesized peptide.



Western blot analysis of various cells using ZADH2 Polyclonal Antibody. Secondary antibody was diluted at 1:20000

This product is suitable for in-vitro studies under the RESEARCH USE ONLY [RUO] licence. This product must not be used as for diagnostic or other medical purposes.  
St John's Laboratory Ltd, Knowledge Dock Business Centre, University Way, London, E16 2RD | Tel: 0208 223 3081