

Anti-XRCC4 antibody (230-310 C-Term) (STJ96286)

STJ96286

GENERAL INFORMATION

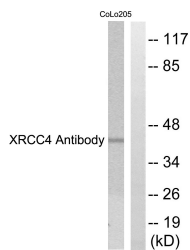
Product Type	Primary antibodies
Short Description	Rabbit polyclonal antibody anti-Dna Repair Protein Xrcc4 (230-310 C-Term) is suitable for use in Western Blot and ELISA research applications.
Applications	WB, ELISA
Host/Source	Rabbit
Reactivity	Human, Rat, Mouse

PRODUCT PROPERTIES

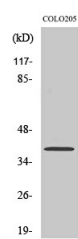
Clonality	Polyclonal
Clone ID	
Concentration	1 mg/mL
Conjugation	Unconjugated
Purification	The antibody was affinity-purified from rabbit anti-serum by affinity-chromatography.
Dilution Range	WB 1:500-1:2000 ELISA 1:20000
Formulation	PBS, 50% Glycerol, 0.5% BSA and 0.02% Sodium Azide.
Isotype	IgG
Storage Instruction	Store at -20°C for up to 1 year from the date of receipt, and avoid repeat freeze-thaw cycles.

TARGET INFORMATION

Gene ID	7518
Gene Symbol	XRCC4
Uniprot ID	XRCC4_HUMAN
Immunogen	The antiserum was produced against synthesized peptide derived from human XRCC4 at amino acid range 261-310
Immunogen Region	230-310 C-Term
Specificity	XRCC4 polyclonal antibody (Dna Repair Protein Xrcc4) binds to endogenous Dna Repair Protein Xrcc4 at the amino acid region 230-310 C-Term.
Immunogen Sequence	



Western blot analysis of lysates from COLO205 cells, using XRCC4 Antibody. The lane on the right is blocked with the synthesized peptide.



Western blot analysis of various cells using XRCC4 Polyclonal Antibody. Secondary antibody was diluted at 1:20000

This product is suitable for in-vitro studies under the RESEARCH USE ONLY [RUO] licence. This product must not be used as for diagnostic or other medical purposes.
St John's Laboratory Ltd, Knowledge Dock Business Centre, University Way, London, E16 2RD | Tel: 0208 223 3081