

Anti-XRCC3 antibody (10-90 Internal) (STJ96284)

STJ96284

GENERAL INFORMATION

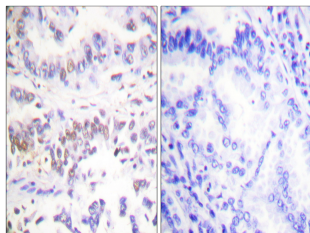
Product Type	Primary antibodies
Short Description	Rabbit polyclonal antibody anti-Dna Repair Protein Xrcc3 (10-90 Internal) is suitable for use in Western Blot, Immunohistochemistry, Immunofluorescence and ELISA research applications.
Applications	WB, IHC-P, IF-P, ELISA
Host/Source	Rabbit
Reactivity	Human, Rat, Mouse

PRODUCT PROPERTIES

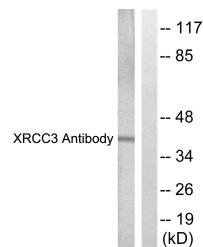
Clonality	Polyclonal
Clone ID	
Concentration	1 mg/mL
Conjugation	Unconjugated
Purification	The antibody was affinity-purified from rabbit anti-serum by affinity-chromatography.
Dilution Range	WB 1:500-1:2000 IHC 1:100-1:300 ELISA 1:10000
Formulation	PBS, 50% Glycerol, 0.5% BSA and 0.02% Sodium Azide.
Isotype	IgG
Storage Instruction	Store at -20°C for up to 1 year from the date of receipt, and avoid repeat freeze-thaw cycles.

TARGET INFORMATION

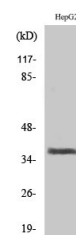
Gene ID	7517
Gene Symbol	XRCC3
Uniprot ID	XRCC3_HUMAN
Immunogen	The antiserum was produced against synthesized peptide derived from human XRCC3 at amino acid range 41-90
Immunogen Region	10-90 Internal
Specificity	XRCC3 polyclonal antibody (Dna Repair Protein Xrcc3) binds to endogenous Dna Repair Protein Xrcc3 at the amino acid region 10-90 Internal.
Immunogen Sequence	



Immunohistochemistry analysis of paraffin-embedded human lung carcinoma tissue, using XRCC3 Antibody. The picture on the right is blocked with the synthesized peptide.



Western blot analysis of lysates from HepG2 cells, treated with Adriamycin 0.5µM 5h, using XRCC3 Antibody. The lane on the right is blocked with the synthesized peptide.



Western blot analysis of various cells using XRCC3 Polyclonal Antibody. Secondary antibody was diluted at 1:20000 cells nucleus extracted by Minute TM Cytoplasmic and Nuclear Fractionation kit (SC-003, Inventibiotec, MN, USA).

This product is suitable for in-vitro studies under the RESEARCH USE ONLY [RUO] licence. This product must not be used as for diagnostic or other medical purposes.
St John's Laboratory Ltd, Knowledge Dock Business Centre, University Way, London, E16 2RD | Tel: 0208 223 3081