

Anti-ARHGEF3 antibody (430-510 C-Term) (STJ96281)

STJ96281

GENERAL INFORMATION

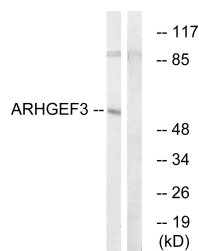
Product Type	Primary antibodies
Short Description	Rabbit polyclonal antibody anti-Rho Guanine Nucleotide Exchange Factor 3 (430-510 C-Term) is suitable for use in Western Blot, Immunohistochemistry, Immunofluorescence and ELISA research applications.
Applications	WB, IHC-P, IF-P, ELISA
Host/Source	Rabbit
Reactivity	Human, Mouse, Rat

PRODUCT PROPERTIES

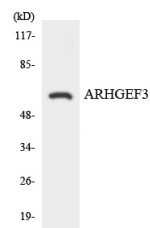
Clonality	Polyclonal
Clone ID	
Concentration	1 mg/mL
Conjugation	Unconjugated
Purification	The antibody was affinity-purified from rabbit anti-serum by affinity-chromatography.
Dilution Range	WB 1:500-1:2000 IHC1:50-300 ELISA 1:20000
Formulation	PBS, 50% Glycerol, 0.5% BSA and 0.02% Sodium Azide.
Isotype	IgG
Storage Instruction	Store at -20°C for up to 1 year from the date of receipt, and avoid repeat freeze-thaw cycles.

TARGET INFORMATION

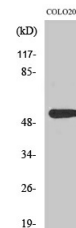
Gene ID	50650
Gene Symbol	ARHGEF3
Uniprot ID	ARHG3_HUMAN
Immunogen	The antiserum was produced against synthesized peptide derived from human ARHGEF3 at amino acid range 456-505
Immunogen Region	430-510 C-Term
Specificity	ARHGEF3 polyclonal antibody (Rho Guanine Nucleotide Exchange Factor 3) binds to endogenous Rho Guanine Nucleotide Exchange Factor 3 at the amino acid region 430-510 C-Term.
Immunogen Sequence	



Western blot analysis of lysates from COLO cells, using ARHGEF3 Antibody. The lane on the right is blocked with the synthesized peptide.



Western blot analysis of the lysates from HeLa cells using ARHGEF3 antibody.



Western blot analysis of various cells using XPLN Polyclonal Antibody. Secondary antibody was diluted at 1:20000

This product is suitable for in-vitro studies under the RESEARCH USE ONLY [RUO] licence. This product must not be used as for diagnostic or other medical purposes.
St John's Laboratory Ltd, Knowledge Dock Business Centre, University Way, London, E16 2RD | Tel: 0208 223 3081