

Anti-AKAP17A antibody (590-670 C-Term) (STJ96277)

STJ96277

GENERAL INFORMATION

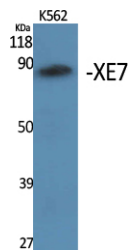
Product Type	Primary antibodies
Short Description	Rabbit polyclonal antibody anti-A-Kinase Anchor Protein 17a (590-670 C-Term) is suitable for use in Western Blot and ELISA research applications.
Applications	WB, ELISA
Host/Source	Rabbit
Reactivity	Human, Rat, Mouse

PRODUCT PROPERTIES

Clonality	Polyclonal
Clone ID	
Concentration	1 mg/mL
Conjugation	Unconjugated
Purification	The antibody was affinity-purified from rabbit anti-serum by affinity-chromatography.
Dilution Range	WB 1:500-1:2000 ELISA 1:40000
Formulation	PBS, 50% Glycerol, 0.5% BSA and 0.02% Sodium Azide.
Isotype	IgG
Storage	Store at -20°C for up to 1 year from the date of receipt, and avoid repeat freeze-thaw cycles.
Instruction	

TARGET INFORMATION

Gene ID	8227
Gene Symbol	AKAP17A
Uniprot ID	AK17A_HUMAN
Immunogen	Synthesized peptide derived from XE7. at amino acid range: 590-670
Immunogen Region	590-670 C-Term
Specificity	AKAP17A polyclonal antibody (A-Kinase Anchor Protein 17a) binds to endogenous A-Kinase Anchor Protein 17a at the amino acid region 590-670 C-Term.
Immunogen Sequence	



Western blot analysis of various cells using XE7 Polyclonal Antibody. Secondary antibody was diluted at 1:20000 cells nucleus extracted by Minute TM Cytoplasmic and Nuclear Fractionation kit (SC-003, Inventibiotech, MN, USA).

This product is suitable for in-vitro studies under the RESEARCH USE ONLY [RUO] licence. This product must not be used as for diagnostic or other medical purposes.
St John's Laboratory Ltd, Knowledge Dock Business Centre, University Way, London, E16 2RD | Tel: 0208 223 3081