

Anti-APBA3 antibody (330-410 Internal) (STJ96276)

STJ96276

GENERAL INFORMATION

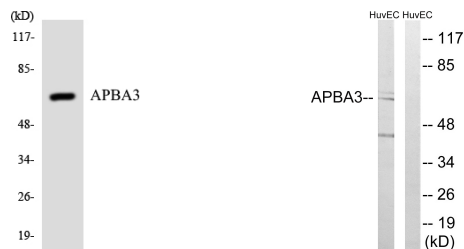
Product Type	Primary antibodies
Short Description	Rabbit polyclonal antibody anti-Amyloid-Beta A4 Precursor Protein-Binding Family A Member 3 (330-410 Internal) is suitable for use in Western Blot, Immunohistochemistry, Immunofluorescence and ELISA research applications.
Applications	WB, IHC-P, IF-P, ELISA
Host/Source	Rabbit
Reactivity	Human, Rat, Mouse

PRODUCT PROPERTIES

Clonality	Polyclonal
Clone ID	
Concentration	1 mg/mL
Conjugation	Unconjugated
Purification	The antibody was affinity-purified from rabbit anti-serum by affinity-chromatography.
Dilution Range	WB 1:500-1:2000 IHC 1:100-1:300 ELISA 1:40000
Formulation	PBS, 50% Glycerol, 0.5% BSA and 0.02% Sodium Azide.
Isotype	IgG
Storage Instruction	Store at 20°C for up to 1 year from the date of receipt, and avoid repeat freeze-thaw cycles.

TARGET INFORMATION

Gene ID	9546
Gene Symbol	APBA3
Uniprot ID	APBA3_HUMAN
Immunogen	The antiserum was produced against synthesized peptide derived from human APBA3 at amino acid range 361-410
Immunogen Region	330-410 Internal
Specificity	APBA3 polyclonal antibody (Amyloid-Beta A4 Precursor Protein-Binding Family A Member 3) binds to endogenous Amyloid-Beta A4 Precursor Protein-Binding Family A Member 3 at the amino acid region 330-410 Internal.
Immunogen Sequence	



Western blot analysis of the lysates from COLO205 cells using APBA3 antibody.

Western blot analysis of lysates from HUVEC cells, using APBA3 Antibody. The lane on the right is blocked with the synthesized peptide.

This product is suitable for in-vitro studies under the RESEARCH USE ONLY [RUO] licence. This product must not be used as for diagnostic or other medical purposes.
St John's Laboratory Ltd, Knowledge Dock Business Centre, University Way, London, E16 2RD | Tel: 0208 223 3081