

Anti-APBA2 antibody (340-420 Internal) (STJ96275)

STJ96275

GENERAL INFORMATION

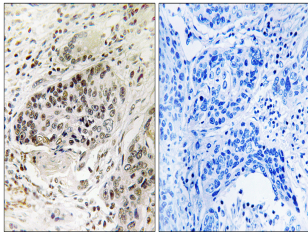
Product Type	Primary antibodies
Short Description	Rabbit polyclonal antibody anti-Amyloid-Beta A4 Precursor Protein-Binding Family A Member 2 (340-420 Internal) is suitable for use in Immunohistochemistry, Immunofluorescence, Western Blot and ELISA research applications.
Applications	IHC-P, IF-P, WB, ELISA
Host/Source	Rabbit
Reactivity	Human, Mouse, Rat

PRODUCT PROPERTIES

Clonality	Polyclonal
Clone ID	
Concentration	1 mg/mL
Conjugation	Unconjugated
Purification	The antibody was affinity-purified from rabbit anti-serum by affinity-chromatography.
Dilution Range	WB 1:500-2000 IHC 1:100-1:300 ELISA 1:20000
Formulation	PBS, 50% Glycerol, 0.5% BSA and 0.02% Sodium Azide.
Isotype	IgG
Storage Instruction	Store at -20°C for up to 1 year from the date of receipt, and avoid repeat freeze-thaw cycles.

TARGET INFORMATION

Gene ID	321
Gene Symbol	APBA2
Uniprot ID	APBA2_HUMAN
Immunogen	The antiserum was produced against synthesized peptide derived from human APBA2 at amino acid range 371-420
Immunogen Region	340-420 Internal
Specificity	APBA2 polyclonal antibody (Amyloid-Beta A4 Precursor Protein-Binding Family A Member 2) binds to endogenous Amyloid-Beta A4 Precursor Protein-Binding Family A Member 2 at the amino acid region 340-420 Internal.
Immunogen Sequence	



Immunohistochemistry analysis of paraffin-embedded human lung carcinoma tissue, using APBA2 Antibody. The picture on the right is blocked with the synthesized peptide.