

Anti-WTAP antibody (290-370 C-Term) (STJ96273)

STJ96273

GENERAL INFORMATION

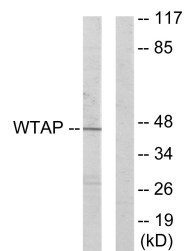
Product Type	Primary antibodies
Short Description	Rabbit polyclonal antibody anti-Pre-Mrna-Splicing Regulator Wtap (290-370 C-Term) is suitable for use in Western Blot, Immunohistochemistry, Immunofluorescence and ELISA research applications.
Applications	WB, IHC-P, IF-P, ELISA
Host/Source	Rabbit
Reactivity	Human, Mouse

PRODUCT PROPERTIES

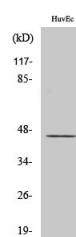
Clonality	Polyclonal
Clone ID	
Concentration	1 mg/mL
Conjugation	Unconjugated
Purification	The antibody was affinity-purified from rabbit anti-serum by affinity-chromatography.
Dilution Range	WB 1:500-1:2000 IHC 1:100-1:300 ELISA 1:20000
Formulation	PBS, 50% Glycerol, 0.5% BSA and 0.02% Sodium Azide.
Isotype	IgG
Storage Instruction	Store at 20°C for up to 1 year from the date of receipt, and avoid repeat freeze-thaw cycles.

TARGET INFORMATION

Gene ID	9589
Gene Symbol	WTAP
Uniprot ID	FL2D_HUMAN
Immunogen Region	The antiserum was produced against synthesized peptide derived from human WTAP at amino acid range 321-370
Immunogen Region	290-370 C-Term
Specificity	WTAP polyclonal antibody (Pre-Mrna-Splicing Regulator Wtap) binds to endogenous Pre-Mrna-Splicing Regulator Wtap at the amino acid region 290-370 C-Term.
Immunogen Sequence	



Western blot analysis of lysates from HUVEC cells, using WTAP Antibody. The lane on the right is blocked with the synthesized peptide.



Western blot analysis of various cells using WTAP Polyclonal Antibody diluted at 1: 500. Secondary antibody was diluted at 1:20000 cells nucleus extracted by Minute™ Cytoplasmic and Nuclear Fractionation kit (SC-003, Inventibiotech, MN, USA).

This product is suitable for in-vitro studies under the RESEARCH USE ONLY [RUO] licence. This product must not be used as for diagnostic or other medical purposes.
St John's Laboratory Ltd, Knowledge Dock Business Centre, University Way, London, E16 2RD | Tel: 0208 223 3081