

## Anti-WNK1 antibody (40-120) (STJ96271)

STJ96271

### GENERAL INFORMATION

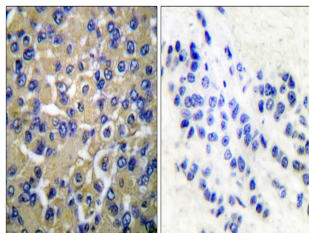
<b>Product Type</b>	Primary antibodies
<b>Short Description</b>	Rabbit polyclonal antibody anti-Serine/Threonine-Protein Kinase Wnk1 (40-120) is suitable for use in Western Blot, Immunohistochemistry, Immunofluorescence and ELISA research applications.
<b>Applications</b>	WB, IHC-P, IF-P, ELISA
<b>Host/Source</b>	Rabbit
<b>Reactivity</b>	Human, Mouse, Rat

### PRODUCT PROPERTIES

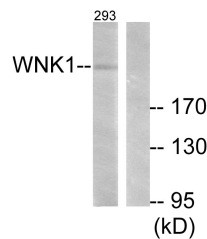
<b>Clonality</b>	Polyclonal
<b>Clone ID</b>	
<b>Concentration</b>	1 mg/mL
<b>Conjugation</b>	Unconjugated
<b>Purification</b>	The antibody was affinity-purified from rabbit anti-serum by affinity-chromatography.
<b>Dilution Range</b>	WB 1:500-1:2000 IHC 1:100-1:300 ELISA 1:10000
<b>Formulation</b>	PBS, 50% Glycerol, 0.5% BSA and 0.02% Sodium Azide.
<b>Isotype</b>	IgG
<b>Storage Instruction</b>	Store at -20°C for up to 1 year from the date of receipt, and avoid repeat freeze-thaw cycles.

### TARGET INFORMATION

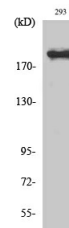
<b>Gene ID</b>	65125
<b>Gene Symbol</b>	WNK1
<b>Uniprot ID</b>	WNK1_HUMAN
<b>Immunogen</b>	The antiserum was produced against synthesized peptide derived from human WNK1 at amino acid range 24-73
<b>Immunogen Region</b>	40-120
<b>Specificity</b>	WNK1 polyclonal antibody (Serine/Threonine-Protein Kinase Wnk1) binds to endogenous Serine/Threonine-Protein Kinase Wnk1 at the amino acid region 40-120.
<b>Immunogen Sequence</b>	



Immunohistochemistry analysis of paraffin-embedded human breast carcinoma tissue, using WNK1 Antibody. The picture on the right is blocked with the synthesized peptide.



Western blot analysis of lysates from 293 cells, treated with EGF 200ng/ml 30', using WNK1 Antibody. The lane on the right is blocked with the synthesized peptide.



Western blot analysis of various cells using WNK1 Polyclonal Antibody. Secondary antibody was diluted at 1:20000