

Anti-WIPF1 antibody (390-470 C-Term) (STJ96270)

STJ96270

GENERAL INFORMATION

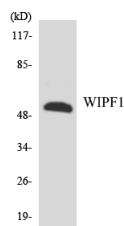
Product Type	Primary antibodies
Short Description	Rabbit polyclonal antibody anti-Was/Wasl-Interacting Protein Family Member 1 (390-470 C-Term) is suitable for use in Western Blot, Immunohistochemistry, Immunofluorescence and ELISA research applications.
Applications	WB, IHC-P, IF-P, ELISA
Host/Source	Rabbit
Reactivity	Human, Mouse, Rat

PRODUCT PROPERTIES

Clonality	Polyclonal
Clone ID	
Concentration	1 mg/mL
Conjugation	Unconjugated
Purification	The antibody was affinity-purified from rabbit anti-serum by affinity-chromatography.
Dilution	WB 1:500-1:2000
Range	IHC 1:100-1:300 ELISA 1:5000
Formulation	PBS, 50% Glycerol, 0.5% BSA and 0.02% Sodium Azide.
Isotype	IgG
Storage Instruction	Store at -20°C for up to 1 year from the date of receipt, and avoid repeat freeze-thaw cycles.

TARGET INFORMATION

Gene ID	7456
Gene Symbol	WIPF1
Uniprot ID	WIPF1_HUMAN
Immunogen	The antiserum was produced against synthesized peptide derived from human WIPF1 at amino acid range 421-470
Immunogen Region	390-470 C-Term
Specificity	WIPF1 polyclonal antibody (Was/Wasl-Interacting Protein Family Member 1) binds to endogenous Was/Wasl-Interacting Protein Family Member 1 at the amino acid region 390-470 C-Term.
Immunogen Sequence	



Western blot analysis of the lysates from HT-29 cells using WIPF1 antibody.

This product is suitable for in-vitro studies under the RESEARCH USE ONLY [RUO] licence. This product must not be used as for diagnostic or other medical purposes.
St John's Laboratory Ltd, Knowledge Dock Business Centre, University Way, London, E16 2RD | Tel: 0208 223 3081