

Anti-WDHD1 antibody (690-770 Internal) (STJ96267)

STJ96267

GENERAL INFORMATION

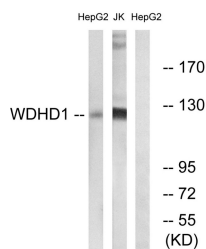
Product Type	Primary antibodies
Short Description	Rabbit polyclonal antibody anti-Wd Repeat And Hmg-Box Dna-Binding Protein 1 (690-770 Internal) is suitable for use in Western Blot, Immunohistochemistry, Immunofluorescence and ELISA research applications.
Applications	WB, IHC-P, IF-P, ELISA
Host/Source	Rabbit
Reactivity	Human, Rat, Mouse

PRODUCT PROPERTIES

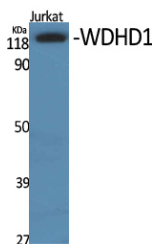
Clonality	Polyclonal
Clone ID	
Concentration	1 mg/mL
Conjugation	Unconjugated
Purification	The antibody was affinity-purified from rabbit anti-serum by affinity-chromatography.
Dilution Range	WB 1:500-1:2000 IHC 1:100-1:300 ELISA 1:10000
Formulation	PBS, 50% Glycerol, 0.5% BSA and 0.02% Sodium Azide.
Isotype	IgG
Storage Instruction	Store at 20°C for up to 1 year from the date of receipt, and avoid repeat freeze-thaw cycles.

TARGET INFORMATION

Gene ID	11169
Gene Symbol	WDHD1
Uniprot ID	WDHD1_HUMAN
Immunogen	The antiserum was produced against synthesized peptide derived from human WDHD1 at amino acid range 721-770
Immunogen Region	690-770 Internal
Specificity	WDHD1 polyclonal antibody (Wd Repeat And Hmg-Box Dna-Binding Protein 1) binds to endogenous Wd Repeat And Hmg-Box Dna-Binding Protein 1 at the amino acid region 690-770 Internal.
Immunogen Sequence	



Western blot analysis of lysates from Jurkat and HepG2 cells, using WDHD1 Antibody. The lane on the right is blocked with the synthesized peptide.



Western blot analysis of various cells using WDHD1 Polyclonal Antibody. Secondary antibody was diluted at 1:20000

This product is suitable for in-vitro studies under the RESEARCH USE ONLY [RUO] licence. This product must not be used as for diagnostic or other medical purposes.
St John's Laboratory Ltd, Knowledge Dock Business Centre, University Way, London, E16 2RD | Tel: 0208 223 3081