

Anti-WASF3 antibody (120-200 Internal) (STJ96264)

STJ96264

GENERAL INFORMATION

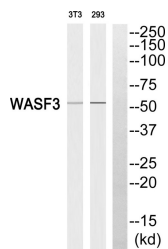
Product Type	Primary antibodies
Short Description	Rabbit polyclonal antibody anti-Wiskott-Aldrich Syndrome Protein Family Member 3 (120-200 Internal) is suitable for use in Western Blot, Immunohistochemistry, Immunofluorescence and ELISA research applications.
Applications	WB, IHC-P, IF-P, ELISA
Host/Source	Rabbit
Reactivity	Human, Mouse

PRODUCT PROPERTIES

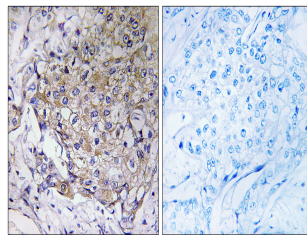
Clonality	Polyclonal
Clone ID	
Concentration	1 mg/mL
Conjugation	Unconjugated
Purification	The antibody was affinity-purified from rabbit anti-serum by affinity-chromatography.
Dilution	WB 1:500-1:2000
Range	IHC 1:100-1:300 ELISA 1:10000
Formulation	PBS, 50% Glycerol, 0.5% BSA and 0.02% Sodium Azide.
Isotype	IgG
Storage Instruction	Store at -20°C for up to 1 year from the date of receipt, and avoid repeat freeze-thaw cycles.

TARGET INFORMATION

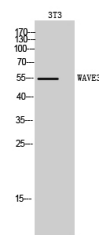
Gene ID	10810
Gene Symbol	WASF3
Uniprot ID	WASF3_HUMAN
Immunogen	The antiserum was produced against synthesized peptide derived from human WASF3 at amino acid range 151-200
Immunogen Region	120-200 Internal
Specificity	WASF3 polyclonal antibody (Wiskott-Aldrich Syndrome Protein Family Member 3) binds to endogenous Wiskott-Aldrich Syndrome Protein Family Member 3 at the amino acid region 120-200 Internal.
Immunogen Sequence	



Western blot analysis of WASF3 Antibody. The lane on the right is blocked with the WASF3 peptide.



Immunohistochemistry analysis of paraffin-embedded human breast carcinoma tissue, using WASF3 Antibody. The picture on the right is blocked with the synthesized peptide.



Western blot analysis of 3T3 cells using WASF3 Polyclonal Antibody. Secondary antibody was diluted at 1:20000

This product is suitable for in-vitro studies under the RESEARCH USE ONLY [RUO] licence. This product must not be used as for diagnostic or other medical purposes.
St John's Laboratory Ltd, Knowledge Dock Business Centre, University Way, London, E16 2RD | Tel: 0208 223 3081