

Anti-WASF2 antibody (110-190 Internal) (STJ96263)

STJ96263

GENERAL INFORMATION

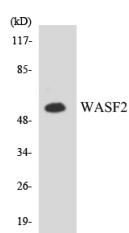
Product Type	Primary antibodies
Short Description	Rabbit polyclonal antibody anti-Wiskott-Aldrich Syndrome Protein Family Member 2 (110-190 Internal) is suitable for use in Western Blot, Immunohistochemistry, Immunofluorescence and ELISA research applications.
Applications	WB, IHC-P, IF-P, ELISA
Host/Source	Rabbit
Reactivity	Human, Mouse, Rat

PRODUCT PROPERTIES

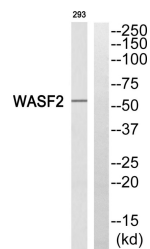
Clonality	Polyclonal
Clone ID	
Concentration	1 mg/mL
Conjugation	Unconjugated
Purification	The antibody was affinity-purified from rabbit anti-serum by affinity-chromatography.
Dilution Range	WB 1:500-1:2000 IHC 1:100-1:300 ELISA 1:5000
Formulation	PBS, 50% Glycerol, 0.5% BSA and 0.02% Sodium Azide.
Isotype	IgG
Storage Instruction	Store at 20°C for up to 1 year from the date of receipt, and avoid repeat freeze-thaw cycles.

TARGET INFORMATION

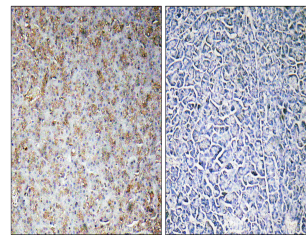
Gene ID	10163
Gene Symbol	WASF2
Uniprot ID	WASF2_HUMAN
Immunogen	The antiserum was produced against synthesized peptide derived from human WASF2 at amino acid range 141-190
Immunogen Region	110-190 Internal
Specificity	WASF2 polyclonal antibody (Wiskott-Aldrich Syndrome Protein Family Member 2) binds to endogenous Wiskott-Aldrich Syndrome Protein Family Member 2 at the amino acid region 110-190 Internal.
Immunogen Sequence	



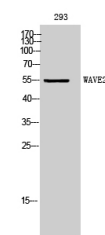
Western blot analysis of the lysates from K562 cells using WASF2 antibody.



Western blot analysis of WASF2 Antibody. The lane on the right is blocked with the WASF2 peptide.



Immunohistochemistry analysis of paraffin-embedded human pancreas, using WASF2 Antibody. The lane on the right is blocked with the WASF2 peptide.



Western blot analysis of 293 cells using WAVE2 Polyclonal Antibody. Secondary antibody was diluted at 1:20000

This product is suitable for in-vitro studies under the RESEARCH USE ONLY [RUO] licence. This product must not be used as for diagnostic or other medical purposes.
St John's Laboratory Ltd, Knowledge Dock Business Centre, University Way, London, E16 2RD | Tel: 0208 223 3081