

Anti-WASF1 antibody (60-140) (STJ96262)

STJ96262

GENERAL INFORMATION

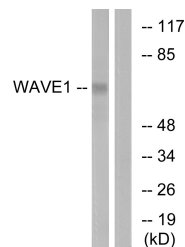
Product Type	Primary antibodies
Short Description	Rabbit polyclonal antibody anti-Wiskott-Aldrich Syndrome Protein Family Member 1 (60-140) is suitable for use in Western Blot, Immunohistochemistry, Immunofluorescence, Immunocytochemistry and ELISA research applications.
Applications	WB, IHC-P, IF, ICC, ELISA
Host/Source	Rabbit
Reactivity	Human, Mouse, Rat

PRODUCT PROPERTIES

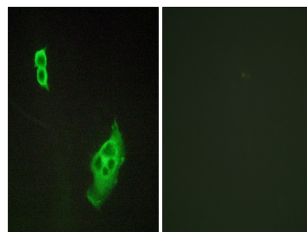
Clonality	Polyclonal
Clone ID	
Concentration	1 mg/mL
Conjugation	Unconjugated
Purification	The antibody was affinity-purified from rabbit anti-serum by affinity-chromatography.
Dilution Range	WB 1:500-1:2000 IHC 1:100-1:300 IF 1:200-1:1000 ELISA 1:40000
Formulation	PBS, 50% Glycerol, 0.5% BSA and 0.02% Sodium Azide.
Isotype	IgG
Storage Instruction	Store at -20°C for up to 1 year from the date of receipt, and avoid repeat freeze-thaw cycles.

TARGET INFORMATION

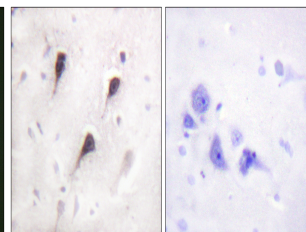
Gene ID	8936
Gene Symbol	WASF1
Uniprot ID	WASF1_HUMAN
Immunogen	The antiserum was produced against synthesized peptide derived from human WAVE1 at amino acid range 91-140
Immunogen Region	60-140
Specificity	WASF1 polyclonal antibody (Wiskott-Aldrich Syndrome Protein Family Member 1) binds to endogenous Wiskott-Aldrich Syndrome Protein Family Member 1 at the amino acid region 60-140.
Immunogen Sequence	



Western blot analysis of lysates from 293 cells, treated with insulin 0.01U/ml 15', using WAVE1 Antibody. The lane on the right is blocked with the synthesized peptide.



Immunofluorescence analysis of COS7 cells, using WAVE1 Antibody. The picture on the right is blocked with the synthesized peptide.



Immunohistochemistry analysis of paraffin-embedded human brain tissue, using WAVE1 Antibody. The picture on the right is blocked with the synthesized peptide.



Western blot analysis of various cells using WAVE1 Polyclonal Antibody. Secondary antibody was diluted at 1:20000

This product is suitable for in-vitro studies under the RESEARCH USE ONLY [RUO] licence. This product must not be used as for diagnostic or other medical purposes.
St John's Laboratory Ltd, Knowledge Dock Business Centre, University Way, London, E16 2RD | Tel: 0208 223 3081