

## Anti-VTI1A antibody (1-80 Internal) (STJ96259)

STJ96259

### GENERAL INFORMATION

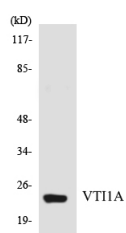
<b>Product Type</b>	Primary antibodies
<b>Short Description</b>	Rabbit polyclonal antibody anti-Vesicle Transport Through Interaction With T-Snares Homolog 1a (1-80 Internal) is suitable for use in Western Blot and ELISA research applications.
<b>Applications</b>	WB, ELISA
<b>Host/Source</b>	Rabbit
<b>Reactivity</b>	Human, Mouse, Rat

### PRODUCT PROPERTIES

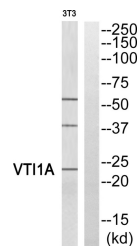
<b>Clonality</b>	Polyclonal
<b>Clone ID</b>	
<b>Concentration</b>	1 mg/mL
<b>Conjugation</b>	Unconjugated
<b>Purification</b>	The antibody was affinity-purified from rabbit anti-serum by affinity-chromatography.
<b>Dilution</b>	WB 1:500-1:2000
<b>Range</b>	ELISA 1:10000
<b>Formulation</b>	PBS, 50% Glycerol, 0.5% BSA and 0.02% Sodium Azide.
<b>Isotype</b>	IgG
<b>Storage</b>	Store at -20°C for up to 1 year from the date of receipt, and avoid repeat freeze-thaw cycles.
<b>Instruction</b>	

### TARGET INFORMATION

<b>Gene ID</b>	143187
<b>Gene Symbol</b>	VTI1A
<b>Uniprot ID</b>	VTI1A_HUMAN
<b>Immunogen</b>	The antiserum was produced against synthesized peptide derived from human VTI1A at amino acid range 31-80
<b>Immunogen Region</b>	1-80 Internal
<b>Specificity</b>	VTI1A polyclonal antibody (Vesicle Transport Through Interaction With T-Snares Homolog 1a) binds to endogenous Vesicle Transport Through Interaction With T-Snares Homolog 1a at the amino acid region 1-80 Internal.
<b>Immunogen Sequence</b>	



Western blot analysis of the lysates from HUVEC cells using VTI1A antibody.



Western blot analysis of VTI1A Antibody. The lane on the right is blocked with the VTI1A peptide.

This product is suitable for in-vitro studies under the RESEARCH USE ONLY [RUO] licence. This product must not be used as for diagnostic or other medical purposes.  
 St John's Laboratory Ltd, Knowledge Dock Business Centre, University Way, London, E16 2RD | Tel: 0208 223 3081