

Anti-VRK2 antibody (140-220 Internal) (STJ96257)

STJ96257

GENERAL INFORMATION

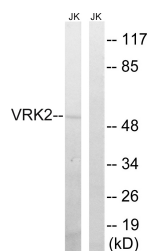
Product Type	Primary antibodies
Short Description	Rabbit polyclonal antibody anti-Serine/Threonine-Protein Kinase Vrk2 (140-220 Internal) is suitable for use in Western Blot and ELISA research applications.
Applications	WB, ELISA
Host/Source	Rabbit
Reactivity	Human, Mouse

PRODUCT PROPERTIES

Clonality	Polyclonal
Clone ID	
Concentration	1 mg/mL
Conjugation	Unconjugated
Purification	The antibody was affinity-purified from rabbit anti-serum by affinity-chromatography.
Dilution Range	WB 1:500-1:2000 ELISA 1:20000
Formulation	PBS, 50% Glycerol, 0.5% BSA and 0.02% Sodium Azide.
Isotype	IgG
Storage Instruction	Store at -20°C for up to 1 year from the date of receipt, and avoid repeat freeze-thaw cycles.

TARGET INFORMATION

Gene ID	7444
Gene Symbol	VRK2
Uniprot ID	VRK2_HUMAN
Immunogen	The antiserum was produced against synthesized peptide derived from human VRK2 at amino acid range 171-220
Immunogen Region	140-220 Internal
Specificity	VRK2 polyclonal antibody (Serine/Threonine-Protein Kinase Vrk2) binds to endogenous Serine/Threonine-Protein Kinase Vrk2 at the amino acid region 140-220 Internal.
Immunogen Sequence	



Western blot analysis of lysates from Jurkat cells, using VRK2 Antibody. The lane on the right is blocked with the synthesized peptide.