

Anti-VPS26B antibody (200-280 Internal) (STJ96254)

STJ96254

GENERAL INFORMATION

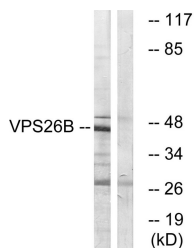
Product Type	Primary antibodies
Short Description	Rabbit polyclonal antibody anti-Vacuolar Protein Sorting-Associated Protein 26b (200-280 Internal) is suitable for use in Western Blot and ELISA research applications.
Applications	WB, ELISA
Host/Source	Rabbit
Reactivity	Human, Mouse

PRODUCT PROPERTIES

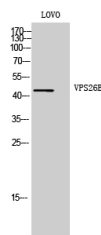
Clonality	Polyclonal
Clone ID	
Concentration	1 mg/mL
Conjugation	Unconjugated
Purification	The antibody was affinity-purified from rabbit anti-serum by affinity-chromatography.
Dilution Range	WB 1:500-1:2000 ELISA 1:10000
Formulation	PBS, 50% Glycerol, 0.5% BSA and 0.02% Sodium Azide.
Isotype	IgG
Storage	Store at -20°C for up to 1 year from the date of receipt, and avoid repeat freeze-thaw cycles.
Instruction	

TARGET INFORMATION

Gene ID	112936
Gene Symbol	VPS26B
Uniprot ID	VP26B_HUMAN
Immunogen	The antiserum was produced against synthesized peptide derived from human VPS26B at amino acid range 231-280
Immunogen Region	200-280 Internal
Specificity	VPS26B polyclonal antibody (Vacuolar Protein Sorting-Associated Protein 26b) binds to endogenous Vacuolar Protein Sorting-Associated Protein 26b at the amino acid region 200-280 Internal.
Immunogen Sequence	



Western blot analysis of lysates from LOVO cells, using VPS26B Antibody. The lane on the right is blocked with the synthesized peptide.



Western blot analysis of LOVO cells using VPS26B Polyclonal Antibody. Secondary antibody was diluted at 1:20000