

Anti-VIPR2 antibody (50-130 Internal) (STJ96253)

STJ96253

GENERAL INFORMATION

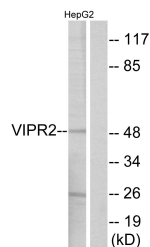
Product Type	Primary antibodies
Short Description	Rabbit polyclonal antibody anti-Vasoactive Intestinal Polypeptide Receptor 2 (50-130 Internal) is suitable for use in Western Blot, Immunohistochemistry, Immunofluorescence, Immunocytochemistry and ELISA research applications.
Applications	WB, IHC-P, IF, ICC, ELISA
Host/Source	Rabbit
Reactivity	Human, Mouse, Rat

PRODUCT PROPERTIES

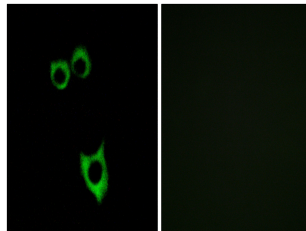
Clonality	Polyclonal
Clone ID	
Concentration	1 mg/mL
Conjugation	Unconjugated
Purification	The antibody was affinity-purified from rabbit anti-serum by affinity-chromatography.
Dilution Range	WB 1:500-1:2000 IHC 1:100-1:300 IF 1:200-1:1000 ELISA 1:5000
Formulation	PBS, 50% Glycerol, 0.5% BSA and 0.02% Sodium Azide.
Isotype	IgG
Storage Instruction	Store at -20°C for up to 1 year from the date of receipt, and avoid repeat freeze-thaw cycles.

TARGET INFORMATION

Gene ID	7434
Gene Symbol	VIPR2
Uniprot ID	VIPR2_HUMAN
Immunogen	The antiserum was produced against synthesized peptide derived from human VIPR2 at amino acid range 83-132
Immunogen Region	50-130 Internal
Specificity	VIPR2 polyclonal antibody (Vasoactive Intestinal Polypeptide Receptor 2) binds to endogenous Vasoactive Intestinal Polypeptide Receptor 2 at the amino acid region 50-130 Internal.
Immunogen Sequence	



Western blot analysis of lysates from HepG2 cells, using VIPR2 Antibody. The lane on the right is blocked with the synthesized peptide.



Immunofluorescence analysis of MCF7 cells, using VIPR2 Antibody. The picture on the right is blocked with the synthesized peptide.

This product is suitable for in-vitro studies under the RESEARCH USE ONLY [RUO] licence. This product must not be used as for diagnostic or other medical purposes.
St John's Laboratory Ltd, Knowledge Dock Business Centre, University Way, London, E16 2RD | Tel: 0208 223 3081