

Anti-VN2R1P antibody (350-430 Internal) (STJ96251)

STJ96251

GENERAL INFORMATION

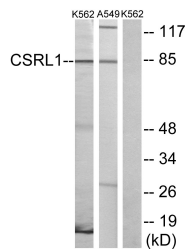
| | |
|--------------------------|---|
| Product Type | Primary antibodies |
| Short Description | Rabbit polyclonal antibody anti-VN2R1P (350-430 Internal) is suitable for use in Western Blot, Immunofluorescence, Immunocytochemistry and ELISA research applications. |
| Applications | WB, IF, ICC, ELISA |
| Host/Source | Rabbit |
| Reactivity | Human, Rat, Mouse |

PRODUCT PROPERTIES

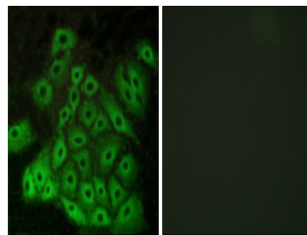
| | |
|----------------------------|--|
| Clonality | Polyclonal |
| Clone ID | |
| Concentration | 1 mg/mL |
| Conjugation | Unconjugated |
| Purification | The antibody was affinity-purified from rabbit anti-serum by affinity-chromatography. |
| Dilution Range | WB 1:500-1:2000 IF 1:200-1:1000 ELISA 1:10000 |
| Formulation | PBS, 50% Glycerol, 0.5% BSA and 0.02% Sodium Azide. |
| Isotype | IgG |
| Storage Instruction | Store at -20°C for up to 1 year from the date of receipt, and avoid repeat freeze-thaw cycles. |

TARGET INFORMATION

| | |
|---------------------------|--|
| Gene ID | |
| Gene Symbol | |
| Uniprot ID | |
| Immunogen | The antiserum was produced against synthesized peptide derived from human CASRL1 at amino acid range 400-449 |
| Immunogen Region | 350-430 Internal |
| Specificity | VN2R1P polyclonal antibody (VN2R1P) binds to endogenous VN2R1P at the amino acid region 350-430 Internal. |
| Immunogen Sequence | |



Western blot analysis of lysates from K562 cells and A549 cells, using CSRL1 Antibody. The lane on the right is blocked with the synthesized peptide.



Immunofluorescence analysis of A549 cells, using CSRL1 Antibody. The picture on the right is blocked with the synthesized peptide.