

Anti-VIP antibody (Internal) (STJ96248)

STJ96248

GENERAL INFORMATION

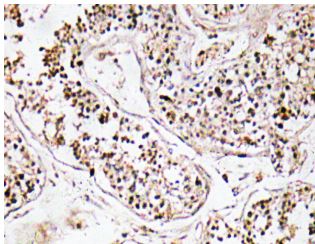
Product Type	Primary antibodies
Short Description	Rabbit polyclonal antibody anti-Vip Peptides Cleaved Into-Intestinal Peptide Phv-42 (Internal) is suitable for use in Immunohistochemistry, Immunofluorescence, Western Blot and ELISA research applications.
Applications	IHC-P, IF-P, WB, ELISA
Host/Source	Rabbit
Reactivity	Human, Rat, Mouse

PRODUCT PROPERTIES

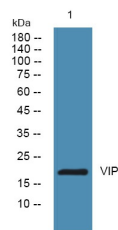
Clonality	Polyclonal
Clone ID	
Concentration	1 mg/mL
Conjugation	Unconjugated
Purification	The antibody was affinity-purified from rabbit anti-serum by affinity-chromatography.
Dilution Range	WB 1:500-2000 IHC 1:100-1:300 ELISA 1:10000
Formulation	PBS, 50% Glycerol, 0.5% BSA and 0.02% Sodium Azide.
Isotype	IgG
Storage Instruction	Store at -20°C for up to 1 year from the date of receipt, and avoid repeat freeze-thaw cycles.

TARGET INFORMATION

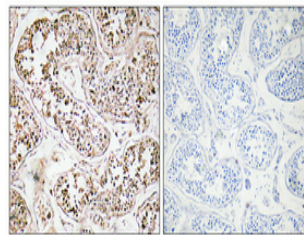
Gene ID	7432
Gene Symbol	VIP
Uniprot ID	VIP_HUMAN
Immunogen	The antiserum was produced against synthesized peptide derived from human VIP at amino acid range 71-120
Immunogen Region	Internal
Specificity	VIP polyclonal antibody (Vip Peptides Cleaved Into-Intestinal Peptide Phv-42) binds to endogenous Vip Peptides Cleaved Into-Intestinal Peptide Phv-42 at the amino acid region Internal.
Immunogen Sequence	



Immunohistochemistry analysis of VIP antibody in paraffin-embedded human testis tissue.



Western blot analysis of lysates from PC12 cells, primary antibody was diluted at 1:1000, 4°C over night



Immunohistochemical analysis of paraffin-embedded Human testis. Antibody was diluted at 1:100 (4°C overnight). High-pressure and temperature Tris-EDTA, pH8.0 was used for antigen retrieval. Negative control (right) obtained from antibody was pre-absorbed by immunogen peptide.

This product is suitable for in-vitro studies under the RESEARCH USE ONLY [RUO] licence. This product must not be used as for diagnostic or other medical purposes.
St John's Laboratory Ltd, Knowledge Dock Business Centre, University Way, London, E16 2RD | Tel: 0208 223 3081