

Anti-VCL antibody (760-840) (STJ96247)

STJ96247

GENERAL INFORMATION

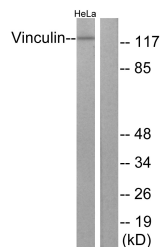
Product Type	Primary antibodies
Short Description	Rabbit polyclonal antibody anti-Vinculin (760-840) is suitable for use in Western Blot, Immunohistochemistry, Immunofluorescence, Immunocytochemistry and ELISA research applications.
Applications	WB, IHC-P, IF, ICC, ELISA
Host/Source	Rabbit
Reactivity	Human, Mouse, Rat

PRODUCT PROPERTIES

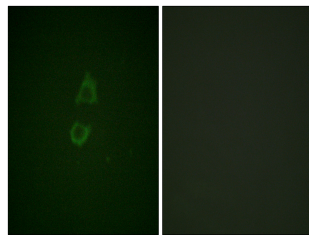
Clonality	Polyclonal
Clone ID	
Concentration	1 mg/mL
Conjugation	Unconjugated
Purification	The antibody was affinity-purified from rabbit anti-serum by affinity-chromatography.
Dilution Range	WB 1:500-1:2000 IHC 1:100-1:300 IF 1:200-1:1000 ELISA 1:10000
Formulation	PBS, 50% Glycerol, 0.5% BSA and 0.02% Sodium Azide.
Isotype	IgG
Storage Instruction	Store at -20°C for up to 1 year from the date of receipt, and avoid repeat freeze-thaw cycles.

TARGET INFORMATION

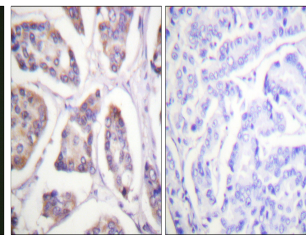
Gene ID	7414
Gene Symbol	VCL
Uniprot ID	VINC_HUMAN
Immunogen	The antiserum was produced against synthesized peptide derived from human Vinculin at amino acid range 786-835
Immunogen Region	760-840
Specificity	VCL polyclonal antibody (Vinculin) binds to endogenous Vinculin at the amino acid region 760-840.
Immunogen Sequence	



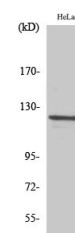
Western blot analysis of lysates from HeLa cells, treated with forskolin 40nM 30', using Vinculin Antibody. The lane on the right is blocked with the synthesized peptide.



Immunofluorescence analysis of A549 cells, using Vinculin Antibody. The picture on the right is blocked with the synthesized peptide.



Immunohistochemistry analysis of paraffin-embedded human breast carcinoma tissue, using Vinculin Antibody. The picture on the right is blocked with the synthesized peptide.



Western blot analysis of various cells using Vinculin Polyclonal Antibody. Secondary antibody was diluted at 1:20000.