

Anti-DUSP22 antibody (80-160 Internal) (STJ96242)

STJ96242

GENERAL INFORMATION

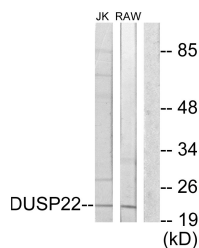
Product Type	Primary antibodies
Short Description	Rabbit polyclonal antibody anti-Dual Specificity Protein Phosphatase 22 (80-160 Internal) is suitable for use in Western Blot, Immunohistochemistry, Immunofluorescence and ELISA research applications.
Applications	WB, IHC-P, IF-P, ELISA
Host/Source	Rabbit
Reactivity	Human, Mouse

PRODUCT PROPERTIES

Clonality	Polyclonal
Clone ID	
Concentration	1 mg/mL
Conjugation	Unconjugated
Purification	The antibody was affinity-purified from rabbit anti-serum by affinity-chromatography.
Dilution	WB 1:500-1:2000
Range	ELISA 1:10000
Formulation	PBS, 50% Glycerol, 0.5% BSA and 0.02% Sodium Azide.
Isotype	IgG
Storage	Store at -20°C for up to 1 year from the date of receipt, and avoid repeat freeze-thaw cycles.
Instruction	

TARGET INFORMATION

Gene ID	56940
Gene Symbol	DUSP22
Uniprot ID	DUS22_HUMAN
Immunogen	The antiserum was produced against synthesized peptide derived from human DUSP22 at amino acid range 121-170
Immunogen Region	80-160 Internal
Specificity	DUSP22 polyclonal antibody (Dual Specificity Protein Phosphatase 22) binds to endogenous Dual Specificity Protein Phosphatase 22 at the amino acid region 80-160 Internal.
Immunogen Sequence	



Western blot analysis of lysates from RAW264.7 and Jurkat cells, using DUSP22 Antibody. The lane on the right is blocked with the synthesized peptide.