

Anti-VHL antibody (10-90) (STJ96241)

STJ96241

GENERAL INFORMATION

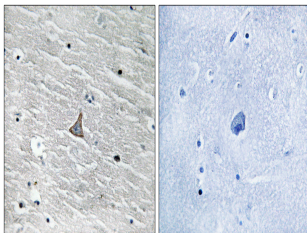
Product Type	Primary antibodies
Short Description	Rabbit polyclonal antibody anti-Von Hippel-Lindau Disease Tumor Suppressor (10-90) is suitable for use in Immunohistochemistry, Immunofluorescence and ELISA research applications.
Applications	IHC-P, IF-P, ELISA
Host/Source	Rabbit
Reactivity	Human, Mouse, Rat

PRODUCT PROPERTIES

Clonality	Polyclonal
Clone ID	
Concentration	1 mg/mL
Conjugation	Unconjugated
Purification	The antibody was affinity-purified from rabbit anti-serum by affinity-chromatography.
Dilution Range	IHC 1:100-1:300 ELISA 1:40000
Formulation	PBS, 50% Glycerol, 0.5% BSA and 0.02% Sodium Azide.
Isotype	IgG
Storage	Store at -20°C for up to 1 year from the date of receipt, and avoid repeat freeze-thaw cycles.
Instruction	

TARGET INFORMATION

Gene ID	7428
Gene Symbol	VHL
Uniprot ID	VHL_HUMAN
Immunogen	The antiserum was produced against synthesized peptide derived from human VHL at amino acid range 34-83
Immunogen Region	10-90
Specificity	VHL polyclonal antibody (Von Hippel-Lindau Disease Tumor Suppressor) binds to endogenous Von Hippel-Lindau Disease Tumor Suppressor at the amino acid region 10-90.
Immunogen Sequence	



Immunohistochemistry analysis of paraffin-embedded human brain tissue, using VHL Antibody. The picture on the right is blocked with the synthesized peptide.