

## Anti-VEGFD antibody (Internal) (STJ96237)

STJ96237

### GENERAL INFORMATION

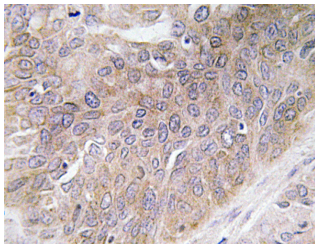
<b>Product Type</b>	Primary antibodies
<b>Short Description</b>	Rabbit polyclonal antibody anti-Vascular Endothelial Growth Factor D (Internal) is suitable for use in Western Blot, Immunohistochemistry, Immunofluorescence and ELISA research applications.
<b>Applications</b>	WB, IHC-P, IF-P, ELISA
<b>Host/Source</b>	Rabbit
<b>Reactivity</b>	Human, Mouse, Rat, Monkey

### PRODUCT PROPERTIES

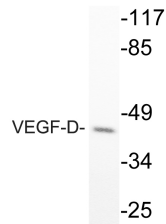
<b>Clonality</b>	Polyclonal
<b>Clone ID</b>	
<b>Concentration</b>	1 mg/mL
<b>Conjugation</b>	Unconjugated
<b>Purification</b>	The antibody was affinity-purified from rabbit anti-serum by affinity-chromatography.
<b>Dilution Range</b>	WB 1:500-1:2000 IHC 1:100-1:300 ELISA 1:40000
<b>Formulation</b>	PBS, 50% Glycerol, 0.5% BSA and 0.02% Sodium Azide.
<b>Isotype</b>	IgG
<b>Storage Instruction</b>	Store at -20°C for up to 1 year from the date of receipt, and avoid repeat freeze-thaw cycles.

### TARGET INFORMATION

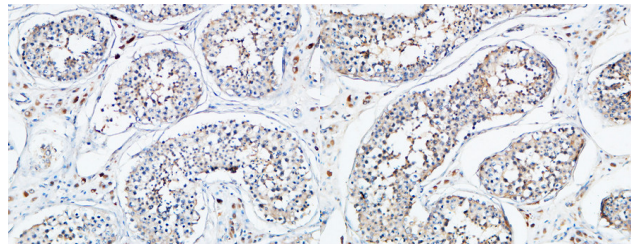
<b>Gene ID</b>	2277
<b>Gene Symbol</b>	VEGFD
<b>Uniprot ID</b>	VEGFD_HUMAN
<b>Immunogen</b>	The antiserum was produced against synthesized peptide derived from human VEGF-D at amino acid range 153-202
<b>Immunogen Region</b>	Internal
<b>Specificity</b>	VEGFD polyclonal antibody (Vascular Endothelial Growth Factor D) binds to endogenous Vascular Endothelial Growth Factor D at the amino acid region Internal.
<b>Immunogen Sequence</b>	



Immunohistochemistry analysis of VEGF-D antibody in paraffin-embedded human lung carcinoma tissue.



Western blot analysis of lysate from COS-7 cells, using VEGF-D antibody.



Immunohistochemical analysis of paraffin-embedded Human testis. 1. Antibody was diluted at 1:200 (4°C overnight). 2. High-pressure and temperature EDTA, pH8.0 was used for antigen retrieval. 3. Secondary antibody was diluted at 1:200 (room temperature, 30min).

Immunohistochemical analysis of paraffin-embedded Human testis. 1. Antibody was diluted at 1:200 (4°C overnight). 2. High-pressure and temperature EDTA, pH8.0 was used for antigen retrieval. 3. Secondary antibody was diluted at 1:200 (room temperature, 30min).

This product is suitable for in-vitro studies under the RESEARCH USE ONLY [RUO] licence. This product must not be used as for diagnostic or other medical purposes.  
St John's Laboratory Ltd, Knowledge Dock Business Centre, University Way, London, E16 2RD | Tel: 0208 223 3081