

Anti-VEGFA antibody (Internal) (STJ96235)

STJ96235

GENERAL INFORMATION

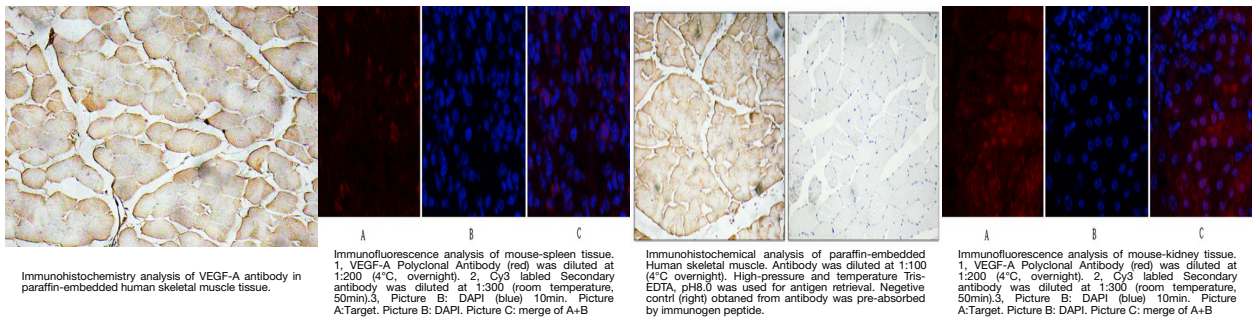
Product Type	Primary antibodies
Short Description	Rabbit polyclonal antibody anti-Vascular Endothelial Growth Factor A (Internal) is suitable for use in Western Blot, Immunofluorescence, Immunocytochemistry, Immunohistochemistry and ELISA research applications.
Applications	WB, IF, ICC, IHC-P, ELISA
Host/Source	Rabbit
Reactivity	Human, Mouse, Rat

PRODUCT PROPERTIES

Clonality	Polyclonal
Clone ID	
Concentration	1 mg/mL
Conjugation	Unconjugated
Purification	The antibody was affinity-purified from rabbit anti-serum by affinity-chromatography.
Dilution	IF 1:50-200
Range	IHC 1:100-1:300 ELISA 1:10000
Formulation	PBS, 50% Glycerol, 0.5% BSA and 0.02% Sodium Azide.
Isotype	IgG
Storage Instruction	Store at -20°C for up to 1 year from the date of receipt, and avoid repeat freeze-thaw cycles.

TARGET INFORMATION

Gene ID	7422
Gene Symbol	VEGFA
Uniprot ID	VEGFA_HUMAN
Immunogen	The antiserum was produced against synthesized peptide derived from human VEGF-A at amino acid range 110-159
Immunogen Region	Internal
Specificity	VEGFA polyclonal antibody (Vascular Endothelial Growth Factor A) binds to endogenous Vascular Endothelial Growth Factor A at the amino acid region Internal.
Immunogen Sequence	



This product is suitable for in-vitro studies under the RESEARCH USE ONLY [RUO] licence. This product must not be used as for diagnostic or other medical purposes.
St John's Laboratory Ltd, Knowledge Dock Business Centre, University Way, London, E16 2RD | Tel: 0208 223 3081