

Anti-ATP6V1D antibody (70-150 Internal) (STJ96225)

STJ96225

GENERAL INFORMATION

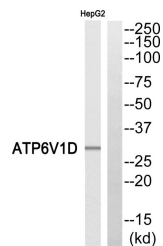
Product Type	Primary antibodies
Short Description	Rabbit polyclonal antibody anti-V-Type Proton Atpase Subunit D (70-150 Internal) is suitable for use in Western Blot and ELISA research applications.
Applications	WB, ELISA
Host/Source	Rabbit
Reactivity	Human, Mouse, Rat

PRODUCT PROPERTIES

Clonality	Polyclonal
Clone ID	
Concentration	1 mg/mL
Conjugation	Unconjugated
Purification	The antibody was affinity-purified from rabbit anti-serum by affinity-chromatography.
Dilution Range	WB 1:500-1:2000 ELISA 1:40000
Formulation	PBS, 50% Glycerol, 0.5% BSA and 0.02% Sodium Azide.
Isotype	IgG
Storage Instruction	Store at -20°C for up to 1 year from the date of receipt, and avoid repeat freeze-thaw cycles.

TARGET INFORMATION

Gene ID	51382
Gene Symbol	ATP6V1D
Uniprot ID	VATD_HUMAN
Immunogen	Synthesized peptide derived from V-ATPase D. at amino acid range: 70-150
Immunogen Region	70-150 Internal
Specificity	ATP6V1D polyclonal antibody (V-Type Proton Atpase Subunit D) binds to endogenous V-Type Proton Atpase Subunit D at the amino acid region 70-150 Internal.
Immunogen Sequence	



Western blot analysis of ATP6V1D Antibody. The lane on the right is blocked with the ATP6V1D peptide.

This product is suitable for in-vitro studies under the RESEARCH USE ONLY [RUO] licence. This product must not be used as for diagnostic or other medical purposes.
St John's Laboratory Ltd, Knowledge Dock Business Centre, University Way, London, E16 2RD | Tel: 0208 223 3081