

## Anti-ATP6V1B1 antibody (350-430 C-Term) (STJ96223)

STJ96223

### GENERAL INFORMATION

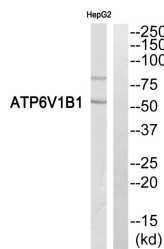
<b>Product Type</b>	Primary antibodies
<b>Short Description</b>	Rabbit polyclonal antibody anti-V-Type Proton Atpase Subunit B-Kidney Isoform (350-430 C-Term) is suitable for use in Western Blot, Immunohistochemistry, Immunofluorescence and ELISA research applications.
<b>Applications</b>	WB, IHC-P, IF-P, ELISA
<b>Host/Source</b>	Rabbit
<b>Reactivity</b>	Human, Mouse

### PRODUCT PROPERTIES

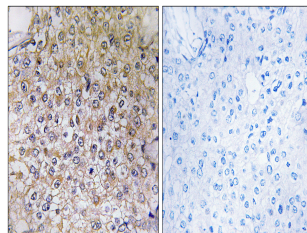
<b>Clonality</b>	Polyclonal
<b>Clone ID</b>	
<b>Concentration</b>	1 mg/mL
<b>Conjugation</b>	Unconjugated
<b>Purification</b>	The antibody was affinity-purified from rabbit anti-serum by affinity-chromatography.
<b>Dilution Range</b>	WB 1:500-1:2000 IHC 1:100-1:300 ELISA 1:5000
<b>Formulation</b>	PBS, 50% Glycerol, 0.5% BSA and 0.02% Sodium Azide.
<b>Isotype</b>	IgG
<b>Storage Instruction</b>	Store at -20°C for up to 1 year from the date of receipt, and avoid repeat freeze-thaw cycles.

### TARGET INFORMATION

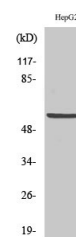
<b>Gene ID</b>	525
<b>Gene Symbol</b>	ATP6V1B1
<b>Uniprot ID</b>	VATB1_HUMAN
<b>Immunogen</b>	The antiserum was produced against synthesized peptide derived from human ATP6V1B1 at amino acid range 381-430
<b>Immunogen Region</b>	350-430 C-Term
<b>Specificity</b>	ATP6V1B1 polyclonal antibody (V-Type Proton Atpase Subunit B-Kidney Isoform) binds to endogenous V-Type Proton Atpase Subunit B-Kidney Isoform at the amino acid region 350-430 C-Term.
<b>Immunogen Sequence</b>	



Western blot analysis of ATP6V1B1 Antibody. The lane on the right is blocked with the ATP6V1B1 peptide.



Immunohistochemistry analysis of paraffin-embedded human breast carcinoma, using ATP6V1B1 Antibody. The lane on the right is blocked with the ATP6V1B1 peptide.



Western blot analysis of various cells using V-ATPase B1 Polyclonal Antibody. Secondary antibody was diluted at 1:20000