

Anti-VASH1 antibody (230-310 Internal) (STJ96218)

STJ96218

GENERAL INFORMATION

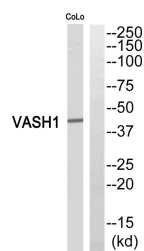
Product Type	Primary antibodies
Short Description	Rabbit polyclonal antibody anti-Tubuliny-Tyr Carboxypeptidase 1 (230-310 Internal) is suitable for use in Western Blot and ELISA research applications.
Applications	WB, ELISA
Host/Source	Rabbit
Reactivity	Human, Mouse, Rat

PRODUCT PROPERTIES

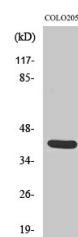
Clonality	Polyclonal
Clone ID	
Concentration	1 mg/mL
Conjugation	Unconjugated
Purification	The antibody was affinity-purified from rabbit anti-serum by affinity-chromatography.
Dilution Range	WB 1:500-1:2000 ELISA 1:40000
Formulation	PBS, 50% Glycerol, 0.5% BSA and 0.02% Sodium Azide.
Isotype	IgG
Storage	Store at -20°C for up to 1 year from the date of receipt, and avoid repeat freeze-thaw cycles.
Instruction	

TARGET INFORMATION

Gene ID	22846
Gene Symbol	VASH1
Uniprot ID	VASH1_HUMAN
Immunogen	The antiserum was produced against synthesized peptide derived from human VASH1 at amino acid range 261-310
Immunogen Region	230-310 Internal
Specificity	VASH1 polyclonal antibody (Tubuliny-Tyr Carboxypeptidase 1) binds to endogenous Tubuliny-Tyr Carboxypeptidase 1 at the amino acid region 230-310 Internal.
Immunogen Sequence	



Western blot analysis of VASH1 Antibody. The lane on the right is blocked with the VASH1 peptide.



Western blot analysis of various cells using Vasohibin Polyclonal Antibody. Secondary antibody was diluted at 1:20000