

Anti-UTP14A antibody (290-370 Internal) (STJ96211)

STJ96211

GENERAL INFORMATION

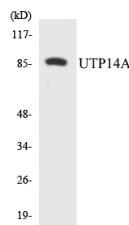
Product Type	Primary antibodies
Short Description	Rabbit polyclonal antibody anti-U3 Small Nucleolar Rna-Associated Protein 14 Homolog A (290-370 Internal) is suitable for use in Western Blot, Immunohistochemistry, Immunofluorescence, Immunocytochemistry and ELISA research applications.
Applications	WB, IHC-P, IF, ICC, ELISA
Host/Source	Rabbit
Reactivity	Human, Mouse

PRODUCT PROPERTIES

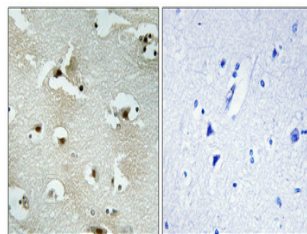
Clonality	Polyclonal
Clone ID	
Concentration	1 mg/mL
Conjugation	Unconjugated
Purification	The antibody was affinity-purified from rabbit anti-serum by affinity-chromatography.
Dilution Range	WB 1:500-1:2000 IHC 1:100-1:300 IF 1:200-1:1000 ELISA 1:20000
Formulation	PBS, 50% Glycerol, 0.5% BSA and 0.02% Sodium Azide.
Isotype	IgG
Storage Instruction	Store at -20°C for up to 1 year from the date of receipt, and avoid repeat freeze-thaw cycles.

TARGET INFORMATION

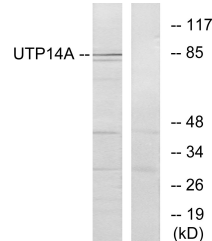
Gene ID	10813
Gene Symbol	UTP14A
Uniprot ID	UT14A_HUMAN
Immunogen	The antiserum was produced against synthesized peptide derived from human UTP14A at amino acid range 321-370
Immunogen Region	290-370 Internal
Specificity	UTP14A polyclonal antibody (U3 Small Nucleolar Rna-Associated Protein 14 Homolog A) binds to endogenous U3 Small Nucleolar Rna-Associated Protein 14 Homolog A at the amino acid region 290-370 Internal.
Immunogen Sequence	



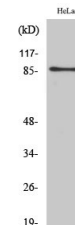
Western blot analysis of the lysates from 293 cells using UTP14A antibody.



Immunohistochemical analysis of paraffin-embedded Human brain. Antibody was diluted at 1:100 (4°C overnight). High-pressure and temperature Tris-EDTA, pH8.0 was used for antigen retrieval. Negative control (right) obtained from antibody was pre-absorbed by immunogen peptide.



Western blot analysis of lysates from HeLa cells, using UTP14A Antibody. The lane on the right is blocked with the synthesized peptide.



Western blot analysis of various cells using UTP14A Polyclonal Antibody diluted at 1:500. Secondary antibody was diluted at 1:20000 cells nucleus extracted by Minute TM Cytoplasmic and Nuclear Fractionation kit (SC-003, Inventibiotec, MN, USA).

This product is suitable for in-vitro studies under the RESEARCH USE ONLY [RUO] licence. This product must not be used as for diagnostic or other medical purposes.
St John's Laboratory Ltd, Knowledge Dock Business Centre, University Way, London, E16 2RD | Tel: 0208 223 3081