

Anti-USF2 antibody (170-250 Internal) (STJ96192)

STJ96192

GENERAL INFORMATION

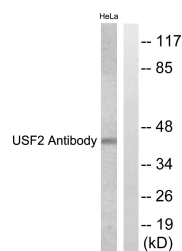
Product Type	Primary antibodies
Short Description	Rabbit polyclonal antibody anti-Upstream Stimulatory Factor 2 (170-250 Internal) is suitable for use in Western Blot, Immunohistochemistry, Immunofluorescence and ELISA research applications.
Applications	WB, IHC-P, IF-P, ELISA
Host/Source	Rabbit
Reactivity	Human, Mouse, Rat

PRODUCT PROPERTIES

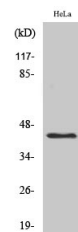
Clonality	Polyclonal
Clone ID	
Concentration	1 mg/mL
Conjugation	Unconjugated
Purification	The antibody was affinity-purified from rabbit anti-serum by affinity-chromatography.
Dilution Range	WB 1:500-1:2000 IHC 1:100-1:300 ELISA 1:20000
Formulation	PBS, 50% Glycerol, 0.5% BSA and 0.02% Sodium Azide.
Isotype	IgG
Storage Instruction	Store at -20°C for up to 1 year from the date of receipt, and avoid repeat freeze-thaw cycles.

TARGET INFORMATION

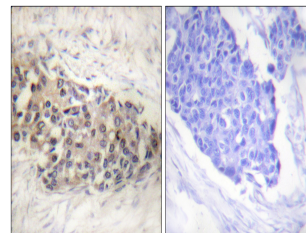
Gene ID	7392
Gene Symbol	USF2
Uniprot ID	USF2_HUMAN
Immunogen	The antiserum was produced against synthesized peptide derived from human USF2 at amino acid range 196-245
Immunogen Region	170-250 Internal
Specificity	USF2 polyclonal antibody (Upstream Stimulatory Factor 2) binds to endogenous Upstream Stimulatory Factor 2 at the amino acid region 170-250 Internal.
Immunogen Sequence	



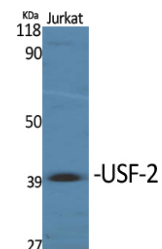
Western blot analysis of lysates from HeLa cells, using USF2 Antibody. The lane on the right is blocked with the synthesized peptide.



Western blot analysis of HeLa cells using USF-2 Polyclonal Antibody. Secondary antibody was diluted at 1:20000 cells nucleus extracted by Minute™™ Cytoplasmic and Nuclear Fractionation kit (SC-003, Inventibiotec, MN, USA).



Immunohistochemistry analysis of paraffin-embedded human breast carcinoma tissue, using USF2 Antibody. The picture on the right is blocked with the synthesized peptide.



Western blot analysis of various cells using USF-2 Polyclonal Antibody. Secondary antibody was diluted at 1:20000 cells nucleus extracted by Minute™™ Cytoplasmic and Nuclear Fractionation kit (SC-003, Inventibiotec, MN, USA).

This product is suitable for in-vitro studies under the RESEARCH USE ONLY [RUO] licence. This product must not be used as for diagnostic or other medical purposes.

St John's Laboratory Ltd, Knowledge Dock Business Centre, University Way, London, E16 2RD | Tel: 0208 223 3081