

Anti-PBOV1 antibody (1-80 Internal) (STJ96189)

STJ96189

GENERAL INFORMATION

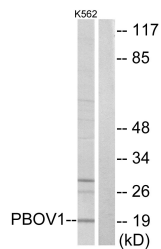
Product Type	Primary antibodies
Short Description	Rabbit polyclonal antibody anti-Prostate And Breast Cancer Overexpressed Gene 1 Protein (1-80 Internal) is suitable for use in Western Blot, Immunohistochemistry, Immunofluorescence, Immunocytochemistry and ELISA research applications.
Applications	WB, IHC-P, IF, ICC, ELISA
Host/Source	Rabbit
Reactivity	Human, Rat, Mouse

PRODUCT PROPERTIES

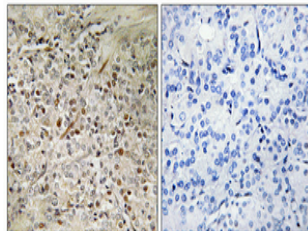
Clonality	Polyclonal
Clone ID	
Concentration	1 mg/mL
Conjugation	Unconjugated
Purification	The antibody was affinity-purified from rabbit anti-serum by affinity-chromatography.
Dilution Range	WB 1:500-1:2000 IHC 1:100-1:300 IF 1:200-1:1000 ELISA 1:40000
Formulation	PBS, 50% Glycerol, 0.5% BSA and 0.02% Sodium Azide.
Isotype	IgG
Storage Instruction	Store at -20°C for up to 1 year from the date of receipt, and avoid repeat freeze-thaw cycles.

TARGET INFORMATION

Gene ID	59351
Gene Symbol	PBOV1
Uniprot ID	PBOV1_HUMAN
Immunogen	The antiserum was produced against synthesized peptide derived from human PBOV1 at amino acid range 31-80
Immunogen Region	1-80 Internal
Specificity	PBOV1 polyclonal antibody (Prostate And Breast Cancer Overexpressed Gene 1 Protein) binds to endogenous Prostate And Breast Cancer Overexpressed Gene 1 Protein at the amino acid region 1-80 Internal.
Immunogen Sequence	



Western blot analysis of lysates from K562 cells, using PBOV1 Antibody. The lane on the right is blocked with the synthesized peptide.



Immunohistochemical analysis of paraffin-embedded Human prostate cancer. Antibody was diluted at 1:100 (4°C overnight). High-pressure and temperature Tris-EDTA, pH8.0 was used for antigen retrieval. Negative control (right) obtained from antibody was pre-absorbed by immunogen peptide.