

Anti-ULK3 antibody (110-190 Internal) (STJ96185)

STJ96185

GENERAL INFORMATION

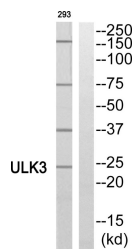
| | |
|--------------------------|--------------------------------------------------------------------------------------------------------------------------------------------------------------------------------------------------------|
| Product Type | Primary antibodies |
| Short Description | Rabbit polyclonal antibody anti-Serine/Threonine-Protein Kinase Ulk3 (110-190 Internal) is suitable for use in Western Blot, Immunohistochemistry, Immunofluorescence and ELISA research applications. |
| Applications | WB, IHC-P, IF-P, ELISA |
| Host/Source | Rabbit |
| Reactivity | Human, Mouse |

PRODUCT PROPERTIES

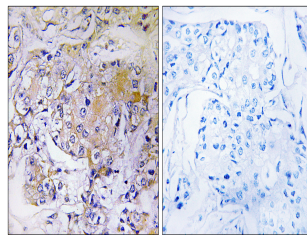
| | |
|----------------------------|------------------------------------------------------------------------------------------------|
| Clonality | Polyclonal |
| Clone ID | |
| Concentration | 1 mg/mL |
| Conjugation | Unconjugated |
| Purification | The antibody was affinity-purified from rabbit anti-serum by affinity-chromatography. |
| Dilution Range | WB 1:500-1:2000 IHC 1:100-1:300 ELISA 1:20000 |
| Formulation | PBS, 50% Glycerol, 0.5% BSA and 0.02% Sodium Azide. |
| Isotype | IgG |
| Storage Instruction | Store at -20°C for up to 1 year from the date of receipt, and avoid repeat freeze-thaw cycles. |

TARGET INFORMATION

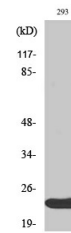
| | |
|---------------------------|---------------------------------------------------------------------------------------------------------------------------------------------------------------------|
| Gene ID | 25989 |
| Gene Symbol | ULK3 |
| Uniprot ID | ULK3_HUMAN |
| Immunogen Region | The antiserum was produced against synthesized peptide derived from human ULK3 at amino acid range 141-190 |
| Immunogen Region | 110-190 Internal |
| Specificity | ULK3 polyclonal antibody (Serine/Threonine-Protein Kinase Ulk3) binds to endogenous Serine/Threonine-Protein Kinase Ulk3 at the amino acid region 110-190 Internal. |
| Immunogen Sequence | |



Western blot analysis of ULK3 Antibody. The lane on the right is blocked with the ULK3 peptide.



Immunohistochemistry analysis of paraffin-embedded human breast carcinoma, using ULK3 Antibody. The lane on the right is blocked with the ULK3 peptide.



Western blot analysis of various cells using ULK3 Polyclonal Antibody diluted at 1:1000. Secondary antibody was diluted at 1:20000