

Anti-UEVLD antibody (110-190 Internal) (STJ96182)

STJ96182

GENERAL INFORMATION

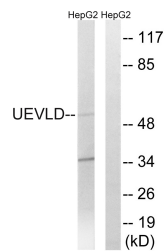
| | |
|--------------------------|---|
| Product Type | Primary antibodies |
| Short Description | Rabbit polyclonal antibody anti-Ubiquitin-Conjugating Enzyme E2 Variant 3 (110-190 Internal) is suitable for use in Western Blot, Immunohistochemistry, Immunofluorescence and ELISA research applications. |
| Applications | WB, IHC-P, IF-P, ELISA |
| Host/Source | Rabbit |
| Reactivity | Human, Rat, Mouse |

PRODUCT PROPERTIES

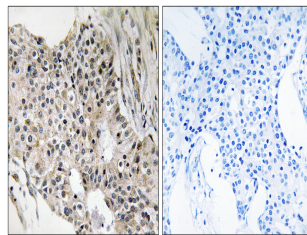
| | |
|----------------------------|--|
| Clonality | Polyclonal |
| Clone ID | |
| Concentration | 1 mg/mL |
| Conjugation | Unconjugated |
| Purification | The antibody was affinity-purified from rabbit anti-serum by affinity-chromatography. |
| Dilution Range | WB 1:500-1:2000 IHC 1:100-1:300 ELISA 1:40000 |
| Formulation | PBS, 50% Glycerol, 0.5% BSA and 0.02% Sodium Azide. |
| Isotype | IgG |
| Storage Instruction | Store at -20°C for up to 1 year from the date of receipt, and avoid repeat freeze-thaw cycles. |

TARGET INFORMATION

| | |
|---------------------------|--|
| Gene ID | 55293 |
| Gene Symbol | UEVLD |
| Uniprot ID | UEVLD_HUMAN |
| Immunogen | The antiserum was produced against synthesized peptide derived from human UEVLD at amino acid range 141-190 |
| Immunogen Region | 110-190 Internal |
| Specificity | UEVLD polyclonal antibody (Ubiquitin-Conjugating Enzyme E2 Variant 3) binds to endogenous Ubiquitin-Conjugating Enzyme E2 Variant 3 at the amino acid region 110-190 Internal. |
| Immunogen Sequence | |



Western blot analysis of lysates from HepG2 cells, using UEVLD Antibody. The lane on the right is blocked with the synthesized peptide.



Immunohistochemistry analysis of paraffin-embedded human breast carcinoma tissue, using UEVLD Antibody. The picture on the right is blocked with the synthesized peptide.