

Anti-UNG antibody (160-240 Internal) (STJ96180)

STJ96180

GENERAL INFORMATION

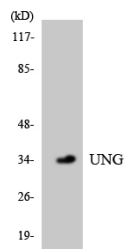
Product Type	Primary antibodies
Short Description	Rabbit polyclonal antibody anti-Uracil-Dna Glycosylase (160-240 Internal) is suitable for use in Western Blot, Immunohistochemistry, Immunofluorescence and ELISA research applications.
Applications	WB, IHC-P, IF-P, ELISA
Host/Source	Rabbit
Reactivity	Human, Mouse, Rat

PRODUCT PROPERTIES

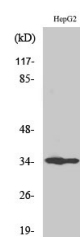
Clonality	Polyclonal
Clone ID	
Concentration	1 mg/mL
Conjugation	Unconjugated
Purification	The antibody was affinity-purified from rabbit anti-serum by affinity-chromatography.
Dilution Range	WB 1:500-1:2000 IHC 1:100-1:300 ELISA 1:40000
Formulation	PBS, 50% Glycerol, 0.5% BSA and 0.02% Sodium Azide.
Isotype	IgG
Storage Instruction	Store at -20°C for up to 1 year from the date of receipt, and avoid repeat freeze-thaw cycles.

TARGET INFORMATION

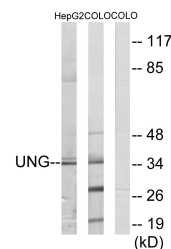
Gene ID	7374
Gene Symbol	UNG
Uniprot ID	UNG_HUMAN
Immunogen	The antiserum was produced against synthesized peptide derived from human UNG at amino acid range 191-240
Immunogen Region	160-240 Internal
Specificity	UNG polyclonal antibody (Uracil-Dna Glycosylase) binds to endogenous Uracil-Dna Glycosylase at the amino acid region 160-240 Internal.
Immunogen Sequence	



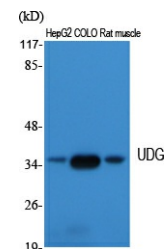
Western blot analysis of the lysates from HepG2 cells using UNG antibody.



Western blot analysis of COLO205 cells using UDG Polyclonal Antibody. Secondary antibody was diluted at 1:20000



Western blot analysis of lysates from HepG2 and COLO cells, using UNG Antibody. The lane on the right is blocked with the synthesized peptide.



Western blot analysis of various cells using UDG Polyclonal Antibody. Secondary antibody was diluted at 1:20000

This product is suitable for in-vitro studies under the RESEARCH USE ONLY [RUO] licence. This product must not be used as for diagnostic or other medical purposes.
St John's Laboratory Ltd, Knowledge Dock Business Centre, University Way, London, E16 2RD | Tel: 0208 223 3081