

Anti-UCP2 antibody (Internal) (STJ96178)

STJ96178

GENERAL INFORMATION

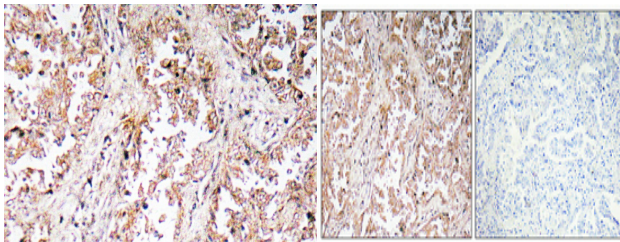
Product Type	Primary antibodies
Short Description	Rabbit polyclonal antibody anti-Mitochondrial Uncoupling Protein 2 (Internal) is suitable for use in Western Blot, Immunohistochemistry, Immunofluorescence and ELISA research applications.
Applications	WB, IHC-P, IF-P, ELISA
Host/Source	Rabbit
Reactivity	Human, Mouse, Rat

PRODUCT PROPERTIES

Clonality	Polyclonal
Clone ID	
Concentration	1 mg/mL
Conjugation	Unconjugated
Purification	The antibody was affinity-purified from rabbit anti-serum by affinity-chromatography.
Dilution Range	IHC 1:100-1:300 ELISA 1:10000
Formulation	PBS, 50% Glycerol, 0.5% BSA and 0.02% Sodium Azide.
Isotype	IgG
Storage	Store at -20°C for up to 1 year from the date of receipt, and avoid repeat freeze-thaw cycles.
Instruction	

TARGET INFORMATION

Gene ID	7351
Gene Symbol	UCP2
Uniprot ID	UCP2_HUMAN
Immunogen	The antiserum was produced against synthesized peptide derived from human UCP2 at amino acid range 64-113
Immunogen Region	Internal
Specificity	UCP2 polyclonal antibody (Mitochondrial Uncoupling Protein 2) binds to endogenous Mitochondrial Uncoupling Protein 2 at the amino acid region Internal.
Immunogen Sequence	



Immunohistochemistry analysis of UCP2 antibody in paraffin-embedded human lung carcinoma tissue.

Immunohistochemical analysis of paraffin-embedded Human lung cancer. Antibody was diluted at 1:100 (4°C overnight). High-pressure and temperature Tris-EDTA, pH8.0 was used for antigen retrieval. Negative control (right) obtained from antibody was pre-absorbed by immunogen peptide.